

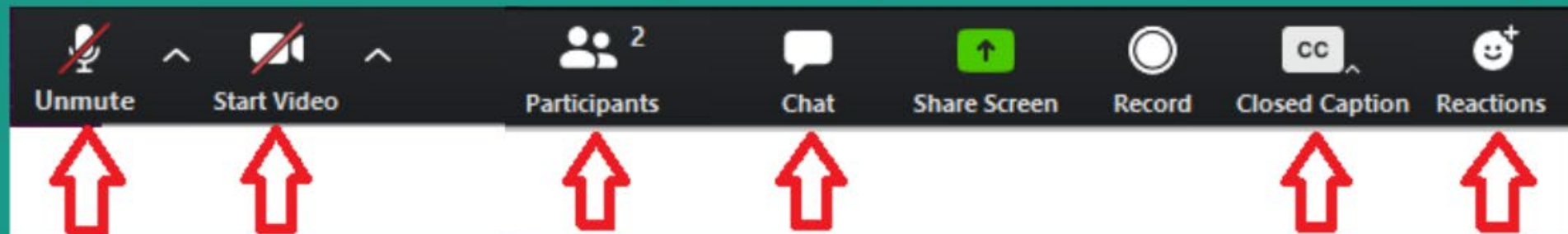
WELCOME to ABE Summer Institute and the Adult Education Update!

- For tech help, chat to Gail Rutan

- In the upper right corner:



- At the bottom: (hover your mouse to reveal)



Keep mic and video off
(looks like this - red line)

Welcome!

Molly Liberto- SI Planning
Committee Chair

Tracy Chase- SI Planning
Committee co-chair





Adult Education Update with MDE

Wednesday, August 19, 2020

In this session

1. Introductions
2. Minnesota ABE Information
3. Contact Hour Working Group Recommendations
4. Fall ABE programming
5. Vision for the year ahead





Introductions



Introductions

MDE Adult Education Team:

Brad Hasskamp, Interim Adult Education Supervisor, Secondary Credential and Policy Specialist

Astrid Liden, Professional Development Specialist

Jodi Versaw, Program Quality Specialist

Julie Dincau, Transitions Specialist

Alice Smith, GED Records Specialist

Cherie Eichinger, Administrative Support Specialist



Brad Hasskamp

My role: Interim Adult Education Supervisor, Secondary Credential and Policy Specialist

Email: brad.hasskamp@state.mn.us

Ask me about: Adult Education policy, GED, Standard Adult Diploma, accountability and data

I've been at MDE since: 2010

Note: I split my time between Minneapolis and Grasston





Astrid Liden

My role: Professional Development Specialist

Email: astrid.liden@state.mn.us

Ask me about: Adult Education professional development (PD) opportunities, design & delivery of program-based PD, content standards

I've been at MDE since: 2006

Note: Our pandemic puppy Joey keeps me smiling





Jodi Versaw

My role: Program Quality Specialist

Email: jodi.versaw@state.mn.us

Ask me about: Annual application and tables, 5-year narratives, Program Improvement, Standard Adult Diploma

I've been at MDE since: 2016

Note: My youngest just turned 13





Julie Dincau

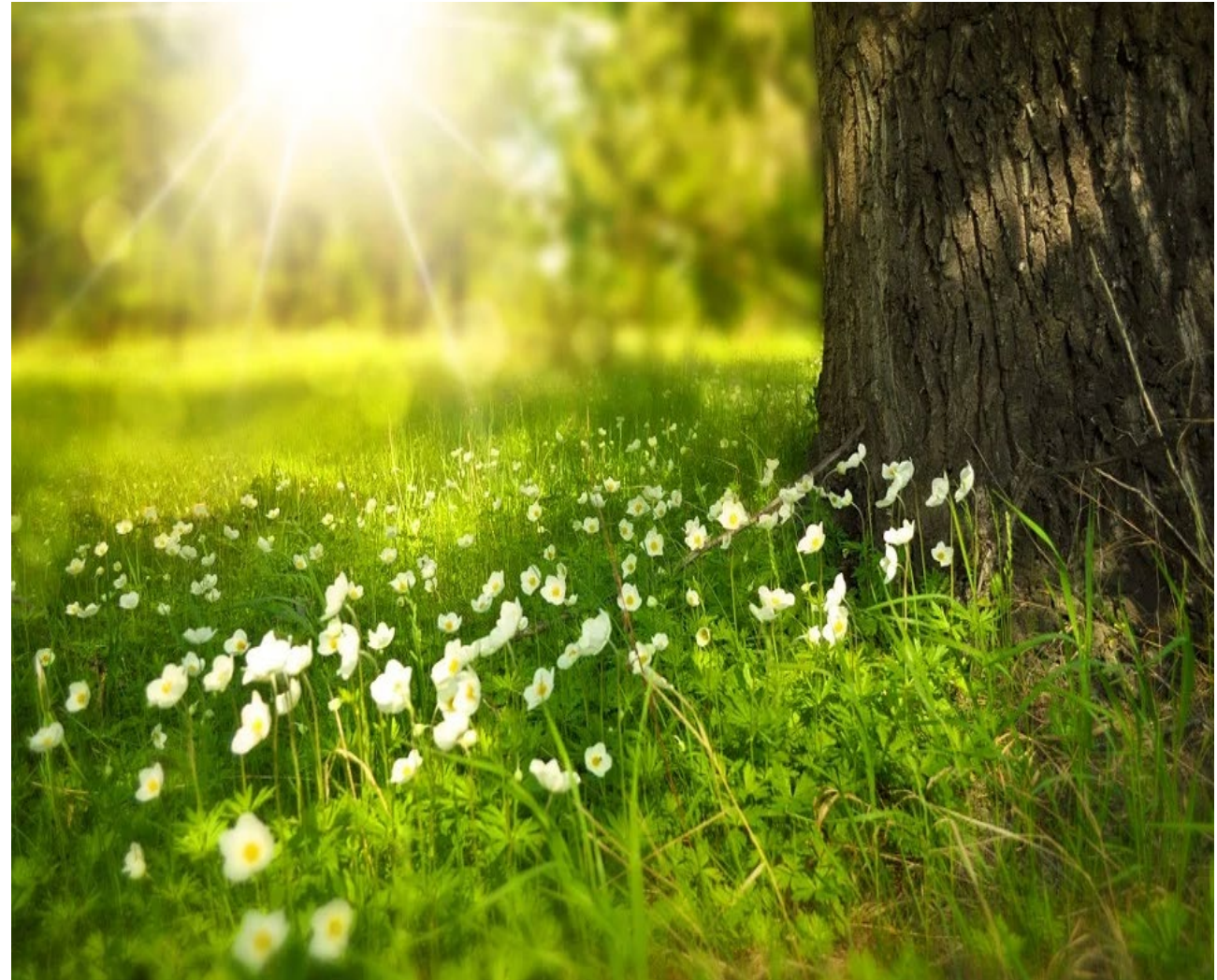
My role: Transitions Specialist

Email: julie.dincau@state.mn.us

Ask me about: IELCE Grant, WIOA partnerships and guidance, Regional Transitions to employment, training, and postsecondary, and animals!

I've been at MDE since: 2010

Note: I have been vegetarian (sometimes pescatarian) for many, many years





Alice Smith

My role: GED Records Specialist

Email: alice.smith@state.mn.us

Ask me about: GED history, GED records and age waivers

I've been at MDE since: 1980

Note: I am looking toward retirement next year!!



Cherie Eichinger

My role: Administrative Support Specialist

Email:
cherie.eichinger@state.mn.us

Ask me about: Getting on the MN ABE email lists, events led by MDE ABE staff, general MDE-ABE questions

I've been at MDE since: 1980

Note: I love walking during the summer time and looking at all the beautiful flowers and landscape that people have in their yards.



Congratulations, Todd!

A person wearing a bright yellow jacket and black gloves is riding a mountain bike on a dirt trail through a misty forest. The bike's handlebars and front fork are visible in the foreground. The background shows tall, thin trees and a soft, hazy light filtering through the canopy.

Todd Wagner has retired as State ABE Director and Supervisor. This is part of his eventual ease into retirement plan.

We thank him for his decades of service to ABE and to the Minnesota Department of Education!

Lucky for us, this won't be good-bye! He plans to shift roles and return to the MDE team again starting in September.

Congratulations, Retirees!

This group has contributed a lot to help students and also improve our programs and the statewide system!

Please share in the chat any recent or upcoming ABE retirees and their contributions!



Welcome, New ABE Staff!



Adult Education is an exciting and collaborative field where you can make a positive impact on the lives of learners. Your contributions can help make the ABE system even better!

Please introduce yourself in the chat with your name and your ABE program.

Learn the basics of MN adult education and meet other new staff through the [ABE Foundations Training!](#)

Thank you, All ABE Staff!

This has been an extremely challenging year with many changes.

Thank you for all the hard work and for striving to offer the best instruction possible for ABE learners!

Please share some shoutouts to your outstanding colleagues!

Stay connected through the [MN ABE Connect Newsletter](#) and our MN Adult Education Schoology Networking groups.



Minnesota Adult Education Information

How many people?

60,320 Students

1,342 ABE Staff

896 Teachers (*61% are part-time*)

2,332 ABE Volunteers

If all MN Adult Education people were a city, it would be the 15th largest city in the state (similar to Eden Prairie and more people than Coon Rapids)!

A map of Wisconsin showing its county boundaries. The state is colored in a light yellow/tan shade, while the surrounding areas are in a darker tan. Blue areas represent water bodies, including Lake Superior to the north and Lake Michigan to the east.

How many programs?

39 ABE Consortia statewide

- *Down from 41 last year*

More than **330** ABE program sites,
in schools, nonprofit organizations,
correctional facilities, Tribal nations,
colleges, and CareerForce.

ABE Support Network?



Minnesota Adult Education

Find PD Opportunities Here:

[MN Adult Education PD Calendar](#)

[MN Adult Education PD Catalog](#)

6 ABE Support Network

Providers to help you and your ABE program!

- **ATLAS:** professional development coordination
- **Literacy Action Network:** program quality support services
- **Literacy Minnesota:** technology integration, distance learning, volunteers and outreach services
- **Minnesota Association of Workforce Boards:** transitions support and WIOA partner collaboration
- **PANDA:** disability training and support services
- **Southwest ABE:** assessment training and services

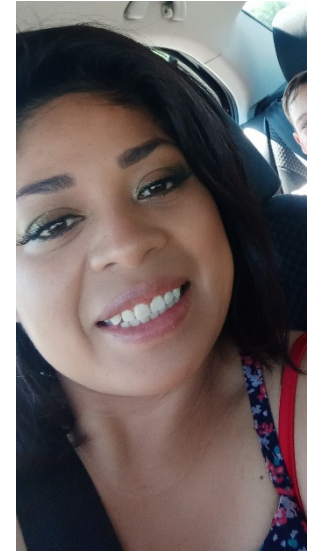
How did we serve learners?

4,485,363 contact hours *(March 2019-March 2020)*

- *Up from 4,465,601 in 2018-19*

2,451 diplomas earned *(July 2019-June 2020)*

- *Down from 2,978 in 2018-19 due to COVID-related disruptions*



The Contact Hour Rate?

For this current fiscal year

- State contact hour rate: **\$7.74**
(up from \$7.30 last year)

- Federal contact hour rate: **\$0.73**
(up from \$0.72 last year)

*(based on March 14, 2019-March 13,
2020 contact and proxy hours)*



Contact Hour Working Group

Contact Hour Reporting Period Working Group

9 ABE members from around the state

Purpose: Recommend what contact hours ABE programs should report for their ABE funding in Fiscal Year 2022 (July 2021-June 2022).

Focus: Minimize negative financial program impact for ABE programs statewide.

3-month virtual project:

- Learning ABE funding statute details,
- Discussing varying effects of COVID-related closures on ABE programs, and
- Exploring solutions that seems the fairest for all ABE programs.



Working Group Members



Name	ABE Consortium/Program
Amber Delliger	Metro North
Anthony Williams	Minneapolis
Deb McDermott-Johnson	SE ABE - Owatonna
Eric Lind	Rosemount-Apple Valley-Eagan ABE
Eric Nesheim	Literacy Minnesota
Heather Williams	Robbinsdale Adult Academic Program
Kirsten Fuglseth	Northwest Service Cooperative ABE
Margo Hernandez / Patty Popp	DOC
Tracy Chase	Arrowhead Economic Opportunity Agency

Working Group Recommendation

Reuse contact hours from March 14, 2019 - March 13, 2020 for 2021-2022 ABE funding, keeping the same contact hour revenue growth caps used in FY21.

Group members voted unanimously in favor of this recommendation.

Intent: If total statewide ABE funding remains the same, consortia will get the same amount of funding in fiscal year 2022 as in the current fiscal year.

If there is a significant ABE funding change from the state legislature, then the committee would recommend ensuring that the impact is equitably distributed across consortia.

Working Group Recommendation Next Steps

- LAN Board will review and vote on recommendation
- MDE Adult Education and MDE Finance staff will review and implement the recommendation



Working Group implications for your program



MDE's message to ABE programs:

- Continue to serve ABE learners as best you can, utilizing all effective methods of communication and instruction, including those that can't be counted for contact hours.
- Focus on serving your learners and your community, not on contact hours.

A colorful illustration representing distance learning. At the top, a red alarm clock, a calendar, a yellow cloud with a Wi-Fi symbol, a laptop, and a smartphone are connected by dashed yellow lines to a central network of yellow dots. Below the text, there is a green horizontal bar, and at the bottom, an open notebook and a desk with a chair are visible.

Distance Learning

Pause on New DL Platform Approvals

There are **40+ approved DL platforms**, providing a wide range of resources for students at all levels

These cover a **wide range of needs**

The DL Support Team cannot review the growing number of approval requests and still provide the other expanded services needed by the field due to the pandemic

There will be a pause on considering new platform approval requests from September 1 – December 31, 2020



Why the Pause?



The transition to statewide DL has presented many **demands and challenges** to the DL support team

This has led to the need to **prioritize** various tasks

During the pause, the Team will:

- **Develop PD on integrating teacher developed course content into a learning management system**
- **Define a model for counting asynchronous DL contact hours which are not provided via an approved DL platform or teacher created course**



Fall ABE Programming

Key Messages

There is no one-size-fits-all for ABE programming across the state this fall.

Continue working with your districts, organizations, partners and other leadership to determine the best plan for ABE programming at your site(s).

Equity Considerations for Fall

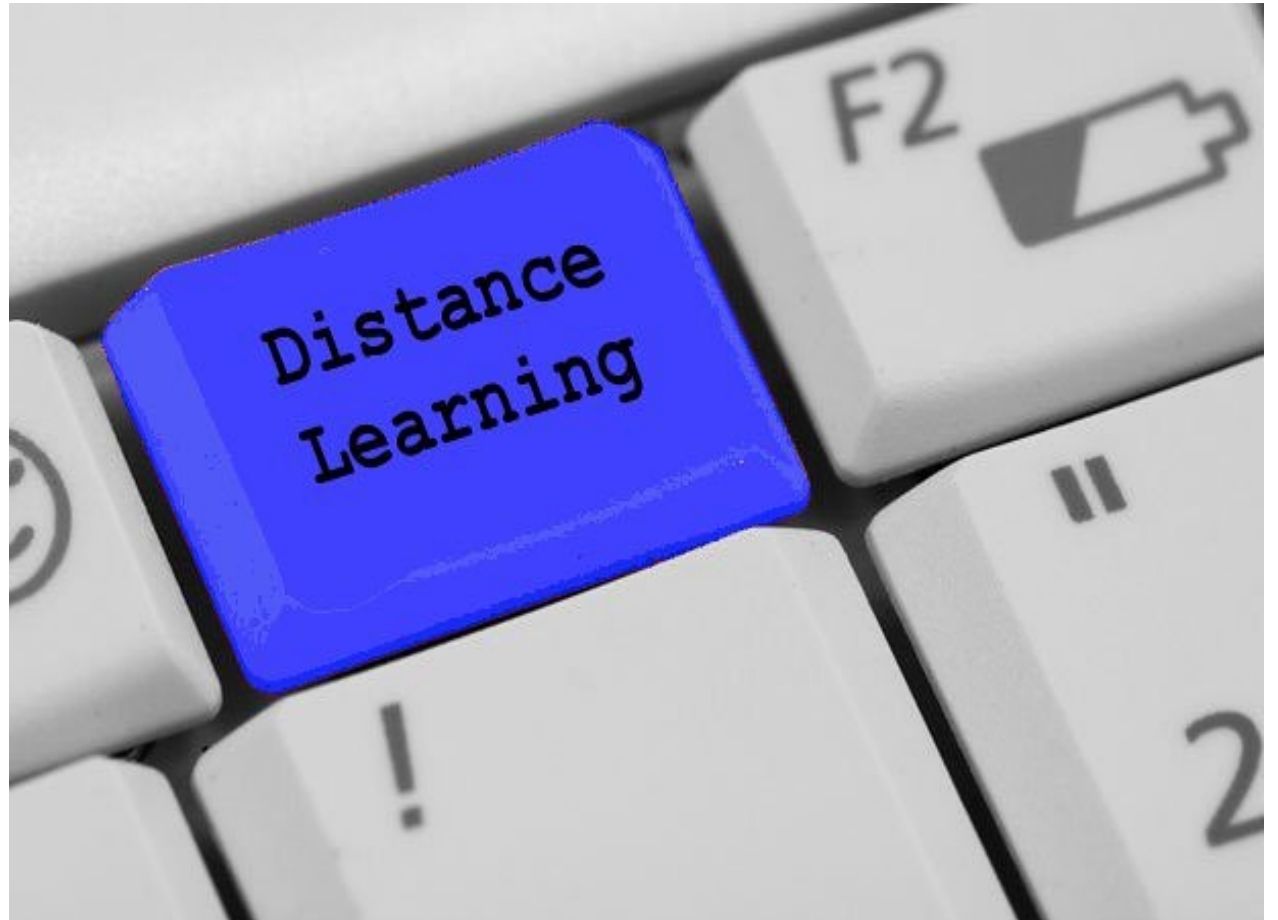
As you design and implement programming this fall, consider:

- How have student demographics changed since COVID-related closures and what are the implications?
- How do we best serve students who:
 - Do not have dependable access to devices and/or internet?
 - Do not have strong digital literacy skills?
 - Are at beginning literacy and/or beginning English levels?
 - Are vulnerable or at high risk of illness?

Implications for ABE Programs

Develop hybrid and distance learning models even if in-person instruction will be offered this fall.

Build models that will serve as many students as possible with high quality education options (not just now but for the future).



Additional Information

Minnesota Adult Basic Education

- [Home](#)

- [About ABE in MN](#)

- [ABE delivery system](#)

- [ABE instruction](#)

- [ABE content standards](#)

- [Career pathways](#)

- [Distance learning](#)

- [Professional development](#)

- [Upcoming events](#)

Minnesota Adult Basic Education

COVID-19 and Minnesota ABE

MDE ABE State Office Communications

[Statement Regarding COVID-Related Exemptions to NRS Testing and Temporarily Lifting 12-Hour Restriction for Students without a Pre-Test](#) (sent out via email on June 11, 2020)

[Frequently Asked Questions about COVID-19 and ABE Programs](#) (May 21, 2020)

[Statement on ABE Programming for Summer 2020](#) (sent out via email on May 19, 2020)

[Statement Regarding Temporarily Waiving the 12-Hour Training](#)

Adult Literacy Ho

[Find the locations of ABE and GED testing centers across Minnesota](#)

GED Information

[Information regarding Minnesota General Educational Development \(GED\) D](#)

ABE Impact Report

To learn about the impact of ABE programs in Minnesota, download the [Minnesota ABE Impact Report \(PDF\)](#).

Overview of ABE

Check out www.mnabe.org for information from the MDE Adult Education Office.

- COVID-related statements can be found on the main page
- Past presentation materials are under “State ABE Presentations”

Vision for the Year Ahead

A close-up photograph of a row of butterfly pupae (chrysalises) hanging from a dark brown branch. The pupae are in various stages of development, showing different colors like green, yellow, and brown. One pupa in the center is dark brown and has a black butterfly emerging from it. The background is a solid green color.

Transformation

“We delight in the beauty of the butterfly, but rarely admit the **changes** it has gone through to achieve that beauty.” - Maya Angelou

We see your amazing efforts to evolve individually, at your programs, and together as a field.

Our Collective Charge



Embrace the transformation and grow with a focus on the most effective services to ABE students.

What does that mean?

- Let's explore why some potential learners are **under-served in ABE** and enable ways for programs to serve them.
- Let's build **flexible programming models** (including in-person, hybrid, and distance education) to serve more people effectively.
- Let's **integrate academic, employability and technology skills and standards** in our instruction.
- Let's improve and use our **technology skills and access** to better provide services students need.
- Let's offer students the **diplomas, certificates and credentials** they need to move forward with their goals.

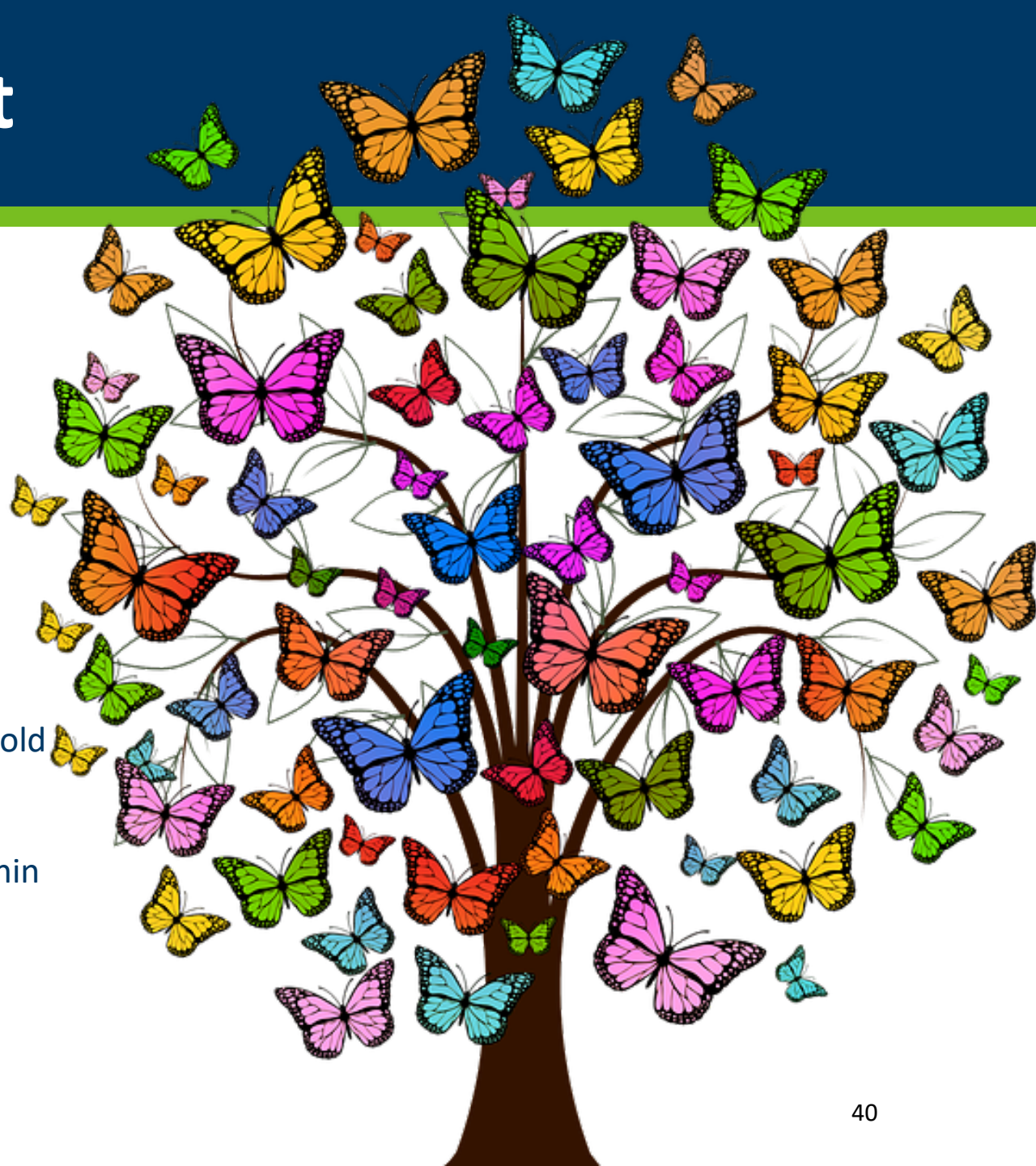
Let's work towards creating these solutions together.

Our Team's Equity Statement

The state Adult Basic Education (ABE) office is committed to creating educational equity.

- We commit to recognizing the historical conditions and barriers that have prevented opportunity and success in learning for students based on their race, class, and other identities.
- We commit to working to dismantle the belief in a hierarchy of human value, with a focus on racial equity.
- We commit to fostering positive and effective learning environments for all by eliminating institutional policies that uphold oppressive systems of power and privilege.
- We commit to collaboratively creating a learning community within the ABE system that promotes opportunities for self-reflection, growth, and change.

We see ABE as key to building educated, engaged, and just communities for all Minnesotans.



Our Adult Education Team's Commitment



We are here to work with you! We want to hear from you! Our role is to:

- Provide effective leadership to the system with our support network and ABE programs.
- Advocate for ABE with partners.
- Do what is best for ABE students, staff and volunteers statewide.

Questions or Input

A single string light bulb is in sharp focus, hanging vertically. It has a black plastic cap and a clear glass bulb that is glowing with a warm yellow light. The background is dark and filled with many out-of-focus bokeh lights of the same warm yellow color, creating a soft, festive atmosphere.

What **questions or input** do you have for the MDE adult education team?

Thank you for your time and your work for ABE learners!

**Please reach
out to us with
questions,
ideas, and
issues**

