

COVID-19 & ABE Updates

We'll begin at 11:30.

Everyone is currently muted to reduce background noise.

If you are having any tech issues, please chat to Karla Vien for assistance.

This PowerPoint and materials are in the materials tab and they will be posted at www.mnabe.org/state-abe-presentations.



Recording Today's Session



We will post the recording at mnabe.org
in State ABE Presentations.



COVID-19 & ABE Updates

Wednesday, May 20, 2020

MDE – Adult Basic Education (ABE) Staff

Staff from Literacy Action Network (LAN) and MN ABE Distance Learning Team



Introductions

MDE Staff:

Todd Wagner, ABE State Director

Astrid Liden, Professional Development Specialist

Brad Hasskamp, Secondary Credential and Policy Specialist

Jodi Versaw, Program Quality Specialist

Julie Dincau, Transitions Specialist

Literacy Action Network and ABE Distance Learning Team members:

Karla Vien, Literacy Action Network Staff

Susan Wetenkamp-Brandt, Senior Manager Ed Technology Literacy Minnesota and Literacy Action Network President

How You Can Participate

When we get to the Q & A:



- Type using the webinar's chat function



- Raise your hand and ask over phone or headset during Q & A periods when unmuted



Ask Karla Vien if you have any tech questions or need technical assistance

Today's Topics

1. Key Messages and Updates
2. Summer Programming Guidance
3. Literacy Action Network Updates
4. Distance Learning
5. High School Equivalency Testing/GED
6. Transitions
7. Resources & Professional Development
8. Questions



Resources from this webinar and earlier communications can be found online at:

www.mnabe.org/state-abe-presentations





Key Messages and Updates from the Minnesota Department of Education

Todd Wagner

Jodi Versaw

Change is hard. ABE has been adjusting to lots of change (now and even before COVID-19). It is understandable to be **challenged** by all the changes, professionally and personally.

Let's remember to show ourselves and each other grace. You are resilient and adapting. Thank you for your work and dedication!

Navigating with Uncertainty



Key Message: Summer Programming



- ABE Programs, like K-12, have options for summer programming that include distance learning or a mix of in-person and distance learning.
- The MDE Adult Education Office encourages programs to use an equity lens in making summer programming decisions.

(More details later this session)

Key Message: Completing IET Approval Form

- We are asking all programs that have classes that are labeled as IET in SiD to complete the IET Approval Form by June 12. If you have a class like this, the consortium manager will receive an email from Cherie this week.



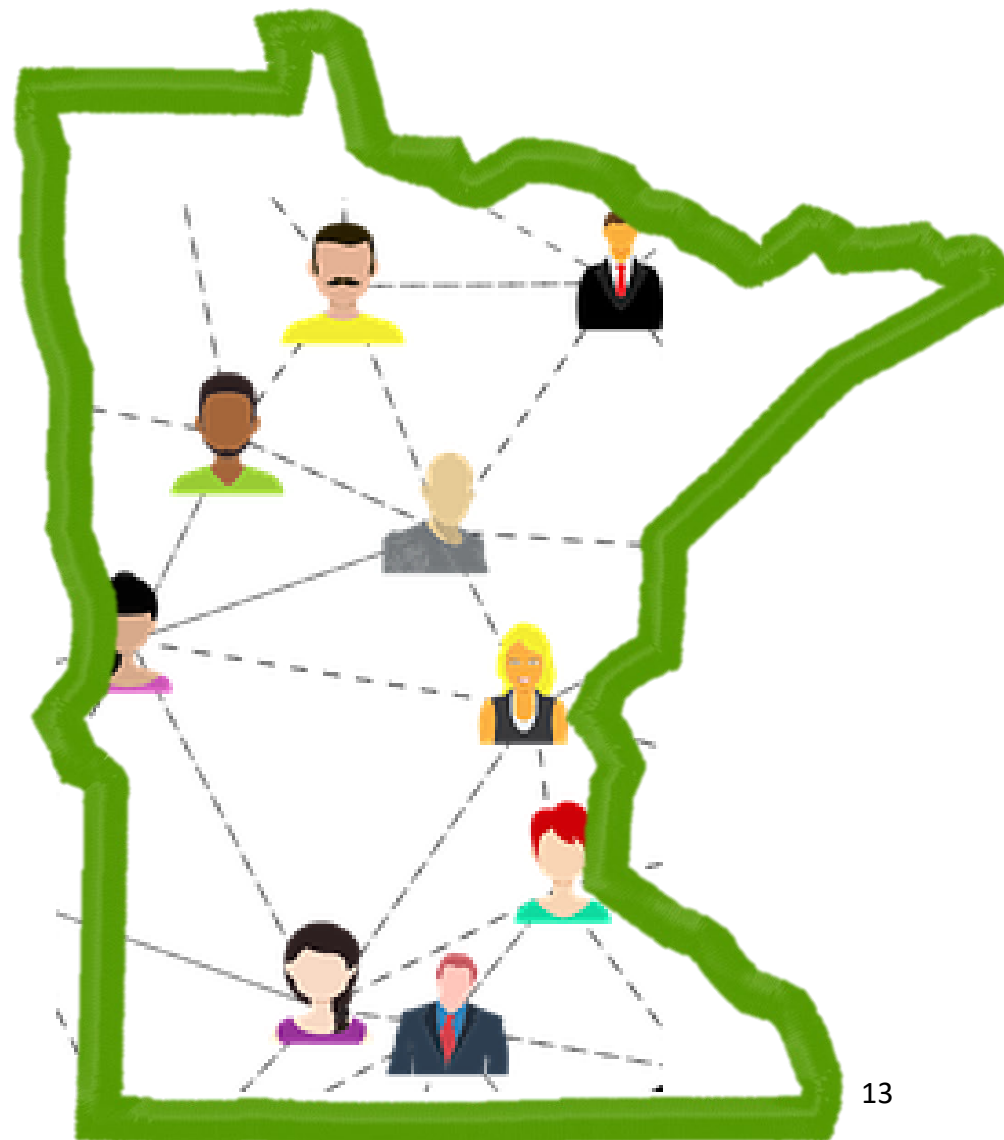
Key Message: Funding



- The 3% increased state ABE funding for 2020-21 has passed.
- We have received a preliminary estimate that federal ABE funding will likely be level for 2020-21. There has been legislation proposed to increase federal ABE funding, but the status of that legislation is still in question.

Key Message: Grants and Contact Hours

- ABE annual grant applications are due June 1.
- Don't forget about Table A1, with the revised contact hour reporting period of March 14, 2019-March 13, 2020.
- We encourage those of you who are interested and that understand contact hour reporting to apply for the Contact Hour Working Group before Tuesday at 10:30am. (Email sent from Cherie on May 15.) Please note we will be selecting up to 9 members to make the group as representative as possible of Minnesota and our ABE communities.



Annual ABE Grant Application due June 1

The grant application materials have been posted and are available on the MDE website.

Annual Application support:

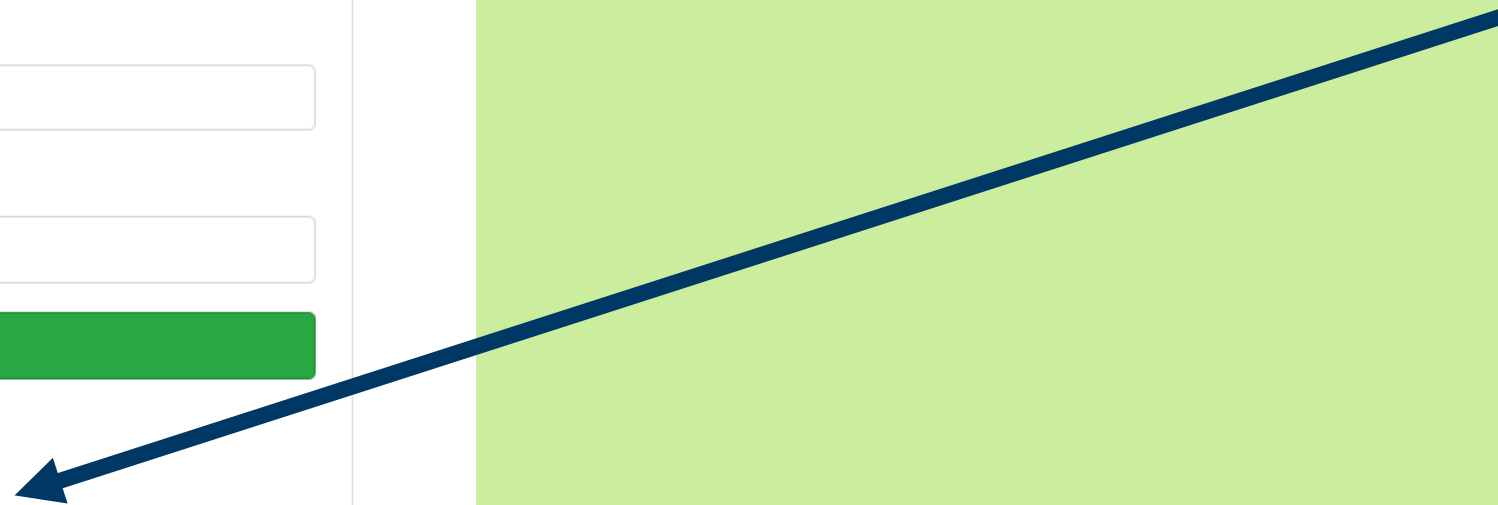
- Series of brief videos
- Recording of Grant Application Workshop (5/6)

Available at mnabe.org/state-abe-presentations



Trouble with EDIAM access?

**For help with EDIAM,
please use this link**



Education Identity & Access
Management (EDIAM)
User Account Login



User ID:

Password:

LOGIN

Don't have an account? [Create Account](#)

Can't access your account? [Get Login Help](#)

5-year narrative deadline extended to Aug 1

2021 narrative cohort:

- Brainerd
- Glacial Lakes-Willmar
- Metro North-Anoka
- Metro South-Bloomington
- Minneapolis
- Red Lake
- ThinkSelf Deaf ABE
- White Earth

Please respond to survey with information about reviewers and reviewer availability in August.
(see email from Jodi on May 8)



- Statement Regarding ABE Programming for Summer 2020 (sent out via email on May 19, 2020)
- Statement Regarding Temporarily Waiving the 12-Hour Training Requirement for Current Volunteers Who Are Tutoring Remotely (sent out via email on May 18, 2020)
- Statement Approving Remote Testing (sent out via email on May 14, 2020)
- Statement on Permitting GED Testing in Public School Buildings (sent out via email on May 6, 2020)
- ABE Memo - Temporary Lifting of 12-hour Restriction (sent out via email on April 29, 2020)
- Statement regarding Continued School Closures and Future ABE Funding (sent out via email on April 28, 2020)
- Statement regarding Minnesota Adult Basic Education Services and COVID-19 (sent out via email on March 17, 2020)

All found at www.mnabe.org

Our Statements



Statement on Remote Testing Options (May 14, 2020)

The Minnesota Department of Education's Adult Education Office approves remote testing by ABE programs for accountability purposes, as long as it adheres to requirements set by test publishers and the U.S. Department of Education. Remote testing is a student taking a test from a different location than the test proctor. For state and federal ABE accountability purposes, this involves the student taking a test on a computer or approved device while being monitored by the proctor using approved live video methods. Tests that can currently be delivered remotely include: BEST Plus, CASAS, and TABE.

Remote testing requirements include:

- Student identification: Proctors must verify the student's identity.
- Test security: Proctors must follow guidelines to ensure test questions remain secure.
- Remote proctor training: Proctors must have completed training on specifics of remote testing.

Statement on Volunteer Training (May 18, 2020)

The Minnesota ABE Volunteer Training Standards Policy states that all volunteers working within ABE and generating student contact hours must have attended an approved 12-hour pre-service training. The Minnesota Department of Education's (MDE) Adult Education Office is temporarily waiving this 12-hour training requirement for current volunteers who are tutoring remotely and generating contact hours.

Volunteers who Qualify

The MDE Adult Education office is temporarily waiving the 12-hour training requirement for volunteers who:

1. Were serving as classroom assistants prior to March 17, 2020;
2. Are tutoring ABE students remotely;
3. Are receiving curriculum/lesson planning guidance from a teacher; and
4. Are doing activities that meet the State ABE criteria for generating contact hours.

Revised FAQ

Coming Soon!

A photograph of a laptop on a wooden table. A green mug with pink flowers is on the table. The background is a blurred green landscape.

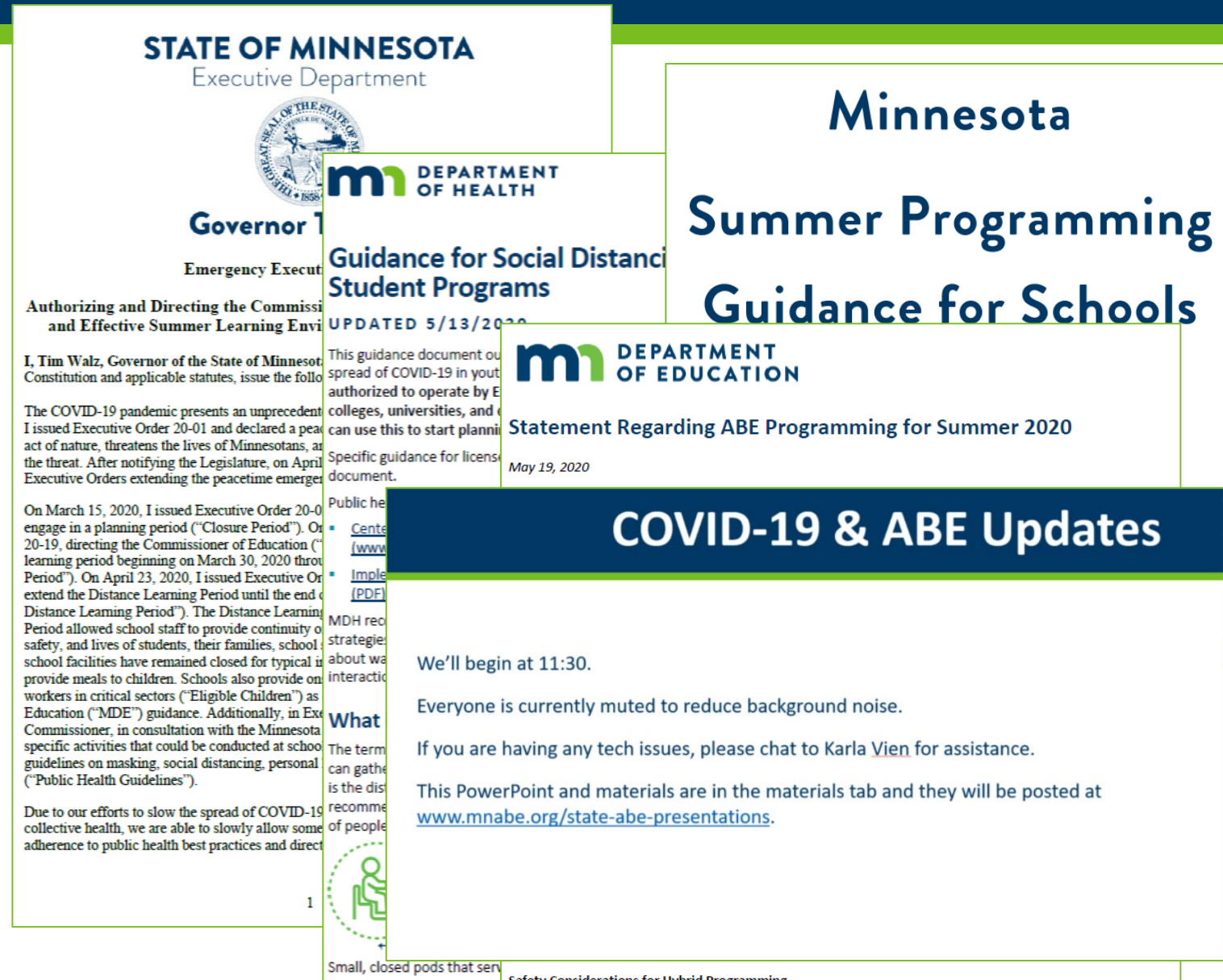
Summer Programming Guidance

Brad Hasskamp

Jodi Versaw

Check Out the Materials

1. Governor's Executive Order 20-57
2. Guidance for Social Distancing in Youth and Student Programs (MDH)
3. Minnesota Summer Programming Guidance for Schools (MDE)
4. MDE Adult Education Office Statement on ABE Programming for Summer 2020
5. Presentation Slides



STATE OF MINNESOTA

Executive Department



Governor Tim Walz

Emergency Executive Order 20-57

Authorizing and Directing the Commissioner of Education to Allow for a Safe and Effective Summer Learning Environment for Minnesota's Students

I, Tim Walz, Governor of the State of Minnesota, by the authority vested in me by the Constitution and applicable statutes, issue the following Executive Order:

The COVID-19 pandemic presents an unprecedented challenge to our State. On March 13, 2020, I issued Executive Order 20-01 and declared a peacetime emergency because this pandemic, an act of nature, threatens the lives of Minnesotans, and local resources are inadequate to address the threat. After notifying the Legislature, on April 13, 2020 and again on May 13, 2020, I issued Executive Orders extending the peacetime emergency declared in Executive Order 20-01.

On March 15, 2020, I issued Executive Order 20-02, directing schools to close to students and to engage in a planning period ("Closure Period"). On March 25, 2020, I issued Executive Order 20-19, directing the Commissioner of Education ("Commissioner") to implement a distance learning period beginning on March 30, 2020 through May 4, 2020 ("Distance Learning Period"). On April 23, 2020, I issued Executive Order 20-41, directing the Commissioner to extend the Distance Learning Period until the end of the 2019-2020 school year ("Extended Distance Learning Period"). The Distance Learning Period and Extended Distance Learning

Governor's Executive Order 20-57

- Stay Safe
- Distance or hybrid options
- Time Frame
- Additional Guidance

Governor Executive Order 20-57: Stay Safe

“Nothing in this Executive Order should be construed to encourage or require Minnesotans in at-risk categories to act inconsistently with public health recommendations or the advice of their doctors. All Minnesotans should continue to regularly check and follow the advice on MDH’s COVID-19 website (<https://www.health.state.mn.us/diseases/coronavirus/>).”

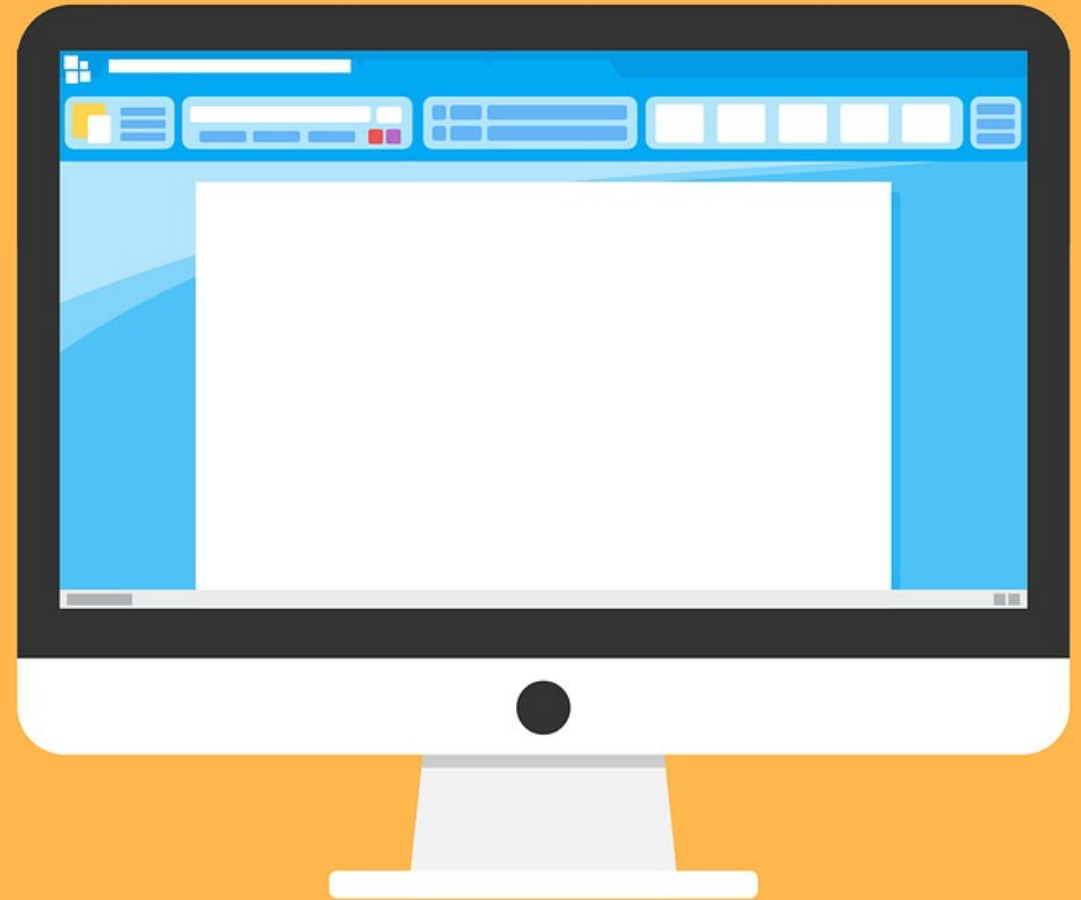
(Item 1, p. 3)



Governor Executive Order 20-57: Summer Programming DL or Hybrid

“...allow school districts and charter schools to offer summer programs and extended school year services through **either a distance learning model or a hybrid model** that employs both distance learning and in-school learning.”

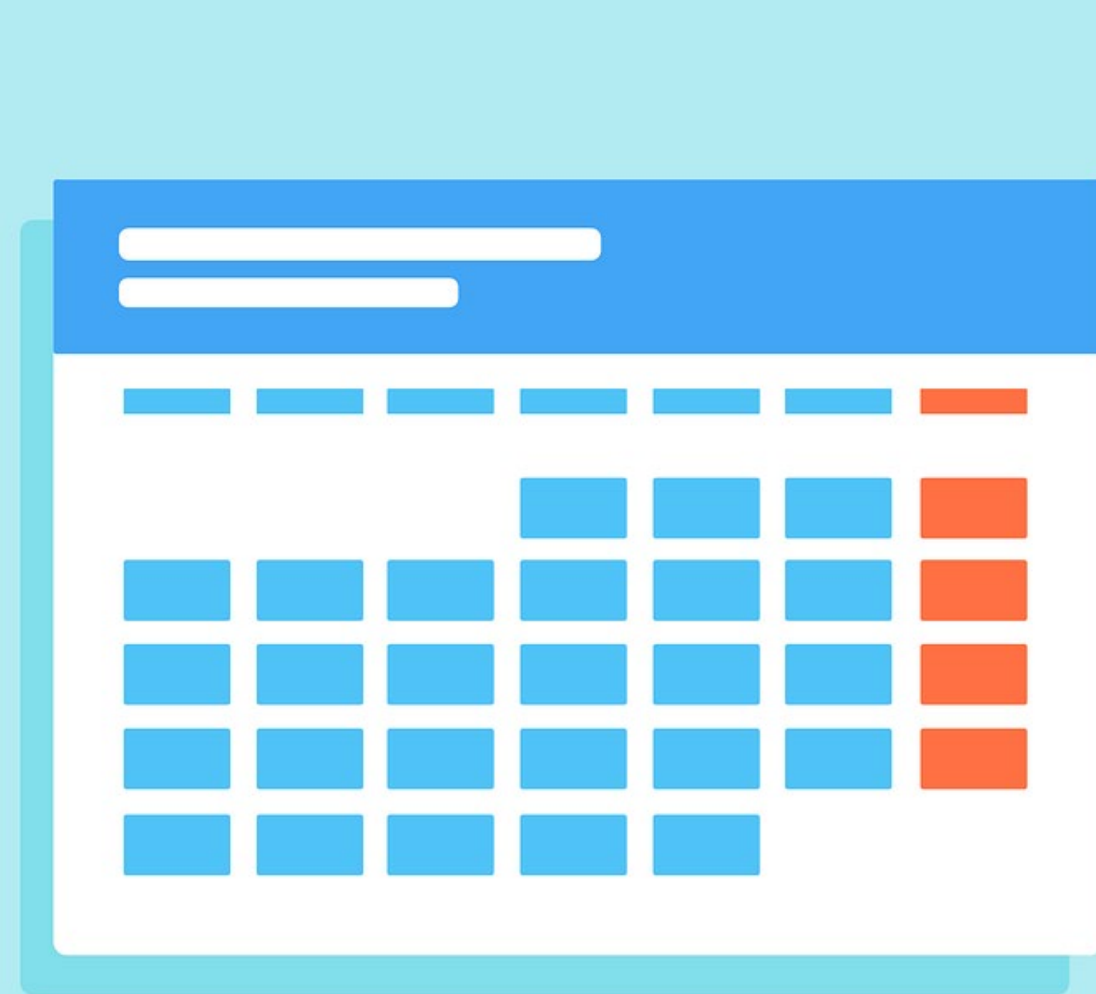
(Item 2, p. 3)



Governor Executive Order 20-57: Planning Days

“School districts and charter schools must provide at least two days for staff planning before their respective Summer Learning Period.” (Item 4, p. 3)

Interpretation for ABE: We understand that ABE instruction is often ongoing and does not have school years for all its instruction like K-12. The Adult Education Team at MDE agrees that instructors, programs and sites need to do appropriate planning and may also be able to also serve students.



Governor Executive Order 20-57: MDE and MDH Guidance

“[Education] Commissioner, in consultation with the Commissioner of Health, to continue to update guidance for distance learning and a hybrid model during the Summer Learning Period (“MDE Guidance”)..” (Item 5, p. 3)

The logo for the state of Minnesota, featuring a stylized 'm' with a green leaf-like shape on its right side, followed by the word 'MINNESOTA' in white capital letters on a dark blue rectangular background.

Minnesota

Summer Programming Guidance for Schools

Guidance from the Education Commissioner

- Guidance for K-12
- Hybrid program details
- Summer programming timeline
- ABE-specific guidance (p. 15)

Education Commissioner: ABE-Specific Guidance

Adult Basic Education consortia are providing programming via distance learning, which may continue this summer, transition to hybrid programming, or both.

GED Testing: On May 6, Commissioner Ricker announced that school facilities may be used for GED testing under certain circumstances. Please see the “Use of School Facilities” section in the Minnesota Distance Teaching and Learning Implementation Guidance for more information.



Comply with Minnesota Department of Health Guidelines

Governor Executive Order 20-57

If a school district or charter school adopts a hybrid model, it must provide students, teachers, and staff with a teaching and learning environment that complies with Public Health Guidelines.

MDE Guidance

Facility Use: Use of school facilities including school buildings, fields, etc. must follow all MDH and CDC guidelines.



The screenshot displays the Minnesota Department of Health website. At the top, the logo features a stylized 'm' with a green leaf-like shape, followed by the text 'DEPARTMENT OF HEALTH'. To the right are navigation buttons for 'HOME', 'TOPICS' (with a dropdown arrow), and 'ABOUT US'. Below the header, a tagline reads 'PROTECTING, MAINTAINING, AND IMPROVING THE HEALTH OF ALL MINNESOTANS'. A large banner image shows a microscopic view of coronavirus particles in red and blue. Below the banner, the text 'Coronavirus Information: Learn More' is visible. Under the 'Topics' heading, there are four categories, each with an icon and a list of related topics:

- Individual & Family Health** (Icon: Family silhouette): Birth records, immunizations, nutrition and physical activity
- Diseases & Conditions** (Icon: Microscope): A-Z disease listing, diseases and conditions by type
- Health Care Facilities, Providers & Insurance** (Icon: Heart with pulse line): Directories of facilities, professional certifications, health insurance and patient safety
- Healthy Communities, Environment & Workplaces** (Icon: House with smoke): Indoor air and drinking water quality, community prevention and emergency preparedness

Guidance for Social Distancing in Youth and Student Programs

UPDATED 5/13/2020

This guidance document outlines the practical application of prevention strategies to reduce the spread of COVID-19 in youth and student programming. This guidance is applicable to programs authorized to operate by Executive Order 20-56 including youth programs, K-12 schools, colleges, universities, and day camps. Other youth serving organization such as overnight camps can use this to start planning should programming be allowed to resume at a later date.

Specific guidance for licensed and certified child care providers is noted on the last page of this document.

Public health guidance is based on:

- [Centers for Disease Control and Prevention's Guidance for Schools and Child Care Programs \(www.cdc.gov/coronavirus/2019-ncov/community/schools-childcare/index.html\)](http://www.cdc.gov/coronavirus/2019-ncov/community/schools-childcare/index.html)
- [Implementation of Mitigation Strategies for Communities with Local COVID-19 Transmission \(PDF\) \(www.cdc.gov/coronavirus/2019-ncov/downloads/community-mitigation-strategy.pdf\)](http://www.cdc.gov/coronavirus/2019-ncov/downloads/community-mitigation-strategy.pdf)

MDH recognizes that each program setting is unique, and it may be difficult for the proposed strategies to be implemented in every setting. Administrators are encouraged to think creatively about ways to increase the physical space between staff and program participants while limiting interactions in large group settings.

What is social distancing?

The term "social distancing" refers to measures being taken to restrict where and when people can gather in order to stop or slow the spread of infectious disease. In general, 6 feet of separation is the distance that should be kept between people interacting within their community. This

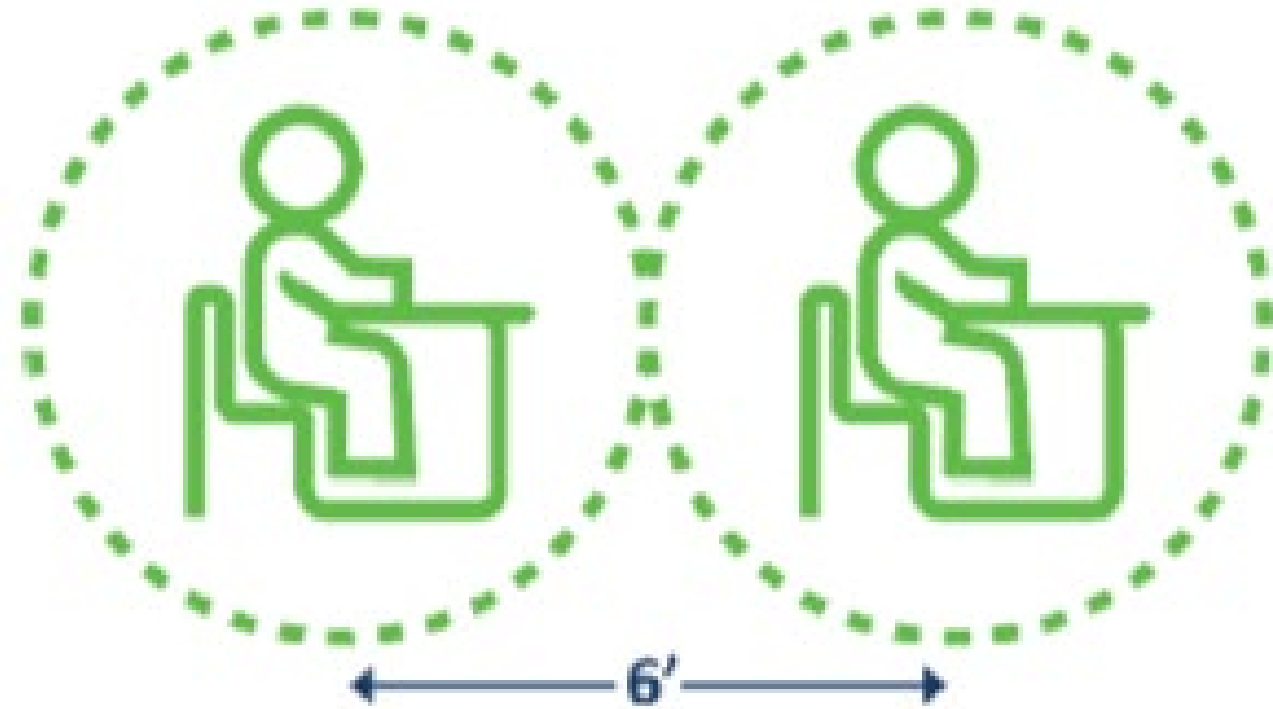
Minnesota Department of Health (MDH) Guidance

- Social Distancing
- Have a Plan and Prepare
- Promote Safe Environment
- Social Distancing Inside
- Promote Cloth Face Coverings
- Minimize Opportunities for Mixing Between Groups
- Encourage & Reinforce Social Norms & Health Etiquette
- Promote Health Checks
- Promote Safe Workplace

MDH Guidance: Adapting K-12 Guidance for ABE Programming

Examples of factors for ABE programs:

- Maintain 6 feet between all people at all times;
- Maintain no more than a 1:9 staff to student ratio (and a smaller ratio in spaces that don't allow for 6 feet of space between 10 people);
- Minimize the use of community supplies, such as writing utensils;
- Clean high touch surfaces; and
- Promote the use of masks.



Statement Regarding ABE Programming for Summer 2020

May 19, 2020

On May 15, Governor Walz signed [Executive Order 20-57](#), which directs the Commissioner of Education to allow for a safe and effective summer learning environment for all Minnesota students. On the same date, the Minnesota Department of Education provided the [Minnesota Summer Programming Guidance for Schools](#) which outlines guidelines and requirements for districts and charters regarding summer learning. This guidance, on pg. 15, refers specifically to Adult Basic Education programs. In addition, the Minnesota Department of Health released the [Guidance for Social Distancing in Youth and Student Programs](#), which outlines the public health requirements and recommendations for summer programming.

Based on Executive Order 20-57 and the MDE guidance, the Minnesota Department of Education-Adult Basic Education (ABE) team provides the following additional guidance to all Minnesota ABE providers.

ABE providers in Minnesota have three options for summer programming starting at the end of the 19-20 school year, but no sooner than June 1:

1. Continue to provide ABE programming using a distance-only education model.
2. Begin providing ABE programming using a hybrid model that combines in-person programming with distance education.
3. Use both of these approaches, depending on the student population, site, or other factors.

The main goal of hybrid programming is to help ABE programs deliver ABE services in a more equitable way to all ABE students in the communities they serve, while still following public health guidelines that will limit the spread of COVID-19.

Safety Considerations for Hybrid Programming

ABE providers that choose options 2 or 3 above must follow all public health guidelines for in-person

1. Summer Programming Options
2. Hybrid Considerations
3. At-Risk
4. Equity Questions
5. Testing

MDE Adult Education Office Statement: Preface

On May 15, Governor Walz signed **Executive Order 20-57**, which directs the Commissioner of Education to allow for a safe and effective summer learning environment for all Minnesota students. On the same date, the Minnesota Department of Education provided the **Minnesota Summer Programming Guidance for Schools** which outlines guidelines and requirements for districts and charters regarding summer learning. This guidance, on pg. 15, refers specifically to Adult Basic Education programs. In addition, the Minnesota Department of Health released the **Guidance for Social Distancing in Youth and Student Programs**, which outlines the public health requirements and recommendations for summer programming.

MDE Adult Education Office Statement: Options

ABE providers in Minnesota have three options for summer programming starting at the end of the 19-20 school year, but no sooner than June 1

1. Continue to provide ABE programming using a **distance-only education model**.
2. Begin providing ABE programming using a **hybrid model** that combines in-person programming with distance education.
3. Use **both** of these approaches, depending on the student population, site, or other factors.

The main goal of hybrid programming is to help ABE programs deliver ABE services in a more equitable way to all ABE students in the communities they serve, while still following public health guidelines that will limit the spread of COVID-19.

MDE Adult Education Office Statement: Hybrid

Safety Considerations for Hybrid Programming

ABE providers that choose options 2 or 3 above must follow all public health guidelines for in-person programming, as outlined in the MDH guidance: Guidance for Social Distancing in Youth and Student Programs. Some of the key factors included in that guidance are:

- Maintaining 6 feet between all people at all times;
- Maintaining no more than a 1:9 staff to student ratio (and a smaller ratio in spaces that don't allow for 6 feet of space between 10 people);
- Establishing a regular cleaning routine for desks, equipment and materials;
- Promoting the use of cloth masks; and minimizing the use of community supplies, such as writing utensils.

Providers should be sure to read the MDH guidance thoroughly and plan carefully and strategically to create the safest programming space possible.

MDE Adult Education Office Statement: At-Risk

It is also important to keep in mind the following statement from [Executive Order 20-57](#): “Nothing in this Executive Order should be construed to encourage or require Minnesotans in at-risk categories to act inconsistently with public health recommendations or the advice of their doctors.”

This applies to ABE students, staff and volunteers. All students should have the opportunity to access distance-only education if they prefer, especially if they or a family member are in an at-risk category. ABE programs should also keep in mind that staff members may have concerns regarding risk factors, and so should make staffing decisions with those concerns in mind, e.g. continuing to allow staff to work from home.

MDE Adult Education Office Statement: Equity

Decision-making Considerations for Summer Programming

In making the decision of what type of summer programming to offer, ABE staff are encouraged to use an equity lens by asking questions such as:

- Which students have had difficulty engaging during this period of school closure? Can we serve them more effectively using a hybrid approach?
- What barriers have made it difficult for students to access distance learning? How can hybrid programming address those barriers?
- What systems, practices and/or procedures can we build with students using a hybrid programming approach this summer, that will facilitate future distance and/or hybrid learning?
- What types of programming require an in-person or face-to-face component, and how can we adapt those to follow public health guidelines?

Remember, the main goal of hybrid programming is to help ABE programs deliver ABE services in a more equitable way to all ABE students in the communities they serve, while still following public health guidelines that will limit the spread of COVID-19.

MDE Adult Education Office Statement: Testing

Testing Guidelines for Summer Programming

Expectations for NRS testing have been adjusted due to program closures related to COVID-19. These adjusted expectations remain in place. The **COVID EFL Exemption will continue to be available within SiD**, so there is currently no restriction on how many hours a student can generate before they receive a pre-test.

Programs are encouraged to consider remote NRS testing as feasible, but can and should continue serving students even when administering an NRS assessment is not possible.

When making decisions about whether to use in-person methods for intake and testing, **programs should prioritize collecting information for instructional and placement purposes rather than testing solely for accountability purposes**, such as measurable skill gains or testing rates.

Keep in mind that the goal of in-person programming this summer is to allow for more equitable delivery of ABE programming.

Summer Hybrid ABE Programming: What could that look like?

- Some students attend in-person in addition to distance education. Others continue as distance-only. For example:
 - Students who have barriers to participating in distance education receive a higher portion of their instruction in-person. (Ideally in-person time builds their capacity to participate in distance education.)
- All students continue to spend the bulk of their time on distance education. Some students report to the building for certain activities:
 - Turning in/picking up independent work
 - Tech support with devices or online learning platforms

Questions

What questions do you have about guidance for **ABE** programming this summer?



Literacy Action Network Updates

Advocating for Minnesota
Adult Basic Education



Susan Wetenkamp-Brandt, LAN President

Contact Hour Counting Period Working Group

- Joint project involving MDE and LAN
- Will provide recommendation regarding contact hour reporting period for 2020-21, by early August
- Up to 9 members representative of ABE statewide
- Applications due 10:30 a.m. on May 26
- Application link: <https://forms.gle/7WdofGuKo9qfagEW9>

Legislative News

A win for Minnesota ABE!

- ABE will receive the full **forecasted** amount of funding
- The forecast includes 3% additional funding over 2020
- This increased allocation becomes the new baseline for future years

Summer Institute

Rescheduled as a Virtual Conference

- August 19-20
- Presentations will be 45 minutes
- Presentation proposals due May 31
- Please apply to present!
- <http://literacyactionnetwork.org/summer-institute/presenter-resources>





Home

Approved DL Platforms

Digital Literacy

Resources

Professional Development

FAQ

News & Events

Contact

Distance Learning

Susan Wetenkamp-Brandt, Literacy Minnesota

Distance Learning: Teacher Developed DL Materials

Three courses have already been approved:

- **Math 0230** (Developmental Education Algebra)
- **Grammar and Writing 2**, a self-paced course of various grammar, mechanics, and usage standards
- **Entry Level Help desk**, part of an IT Career Pathway P2P grant.

To submit an application, see <http://mnabe-distancelearning.org/>

Distance Learning: Recently Approved Platforms

- **GED Ready:** Provides practice tests to determine readiness for the actual GED and for the diagnostic reports to guide targeted instruction
- **EBSCO Learning:** Instruction on basic computer/digital literacy skills
- **ReadWorks:** Provides high-quality library of fiction and nonfiction passages to increase reading comprehension and vocabulary acquisition
- **GogyUp Reader:** Provides a free literacy platform that delivers in-the-moment, personalized reading assistance for any text



High School Equivalency

Brad Hasskamp

Access to School Buildings for GED Testing

Guidance from Education Commissioner

On May 5, Minnesota Department of Education Commissioner, Mary Cathryn Ricker, announced that operating a GED Testing Center in compliance with Minnesota Department of Health guidelines is an allowable use of a public school building.



Guidance from Education Commissioner

- Is **permissive**, meaning it permits but does not require GED Testing Centers located in public schools to re-open.

GED Testing at Schools: Permissive



Guidance from Education Commissioner

- Requires that programs **follow the Minnesota Department of Health (MDH) guidance** provided in the School Building Use Guidance for In-Person Assessment/Hands-On Course Completion.

GED Testing: Adhere to MDH Guidance



Guidance from Education Commissioner

- **Applies only to GED Testing Centers located in K-12 public schools;** the provision does not apply to GED Testing Centers located in non-school buildings which continue to be subject to other executive orders and their host organization guidance.

GED Testing: Public Schools



Guidance from Education Commissioner

- **Does not waive GED Testing Service or Pearson VUE requirements** regarding test center operations. GED Testing Centers must comply with all GED Testing Service and Pearson VUE requirements, while also following Minnesota Department of Health guidance.

GED Testing: Adhere to Pearson VUE and GEDTS Policies and Guidelines



OP (GED Online Proctored Testing)

- Must be taken by tester on computer meeting technical requirements.
- Available in Minnesota as early as next week
- Test cost is same as on-site GED testing
- Proctors from OnVUE

GED Virtual Meeting (for anyone working with GED Testers): Thursday, May 28 (11:30 a.m. – 1 p.m.)

Register:

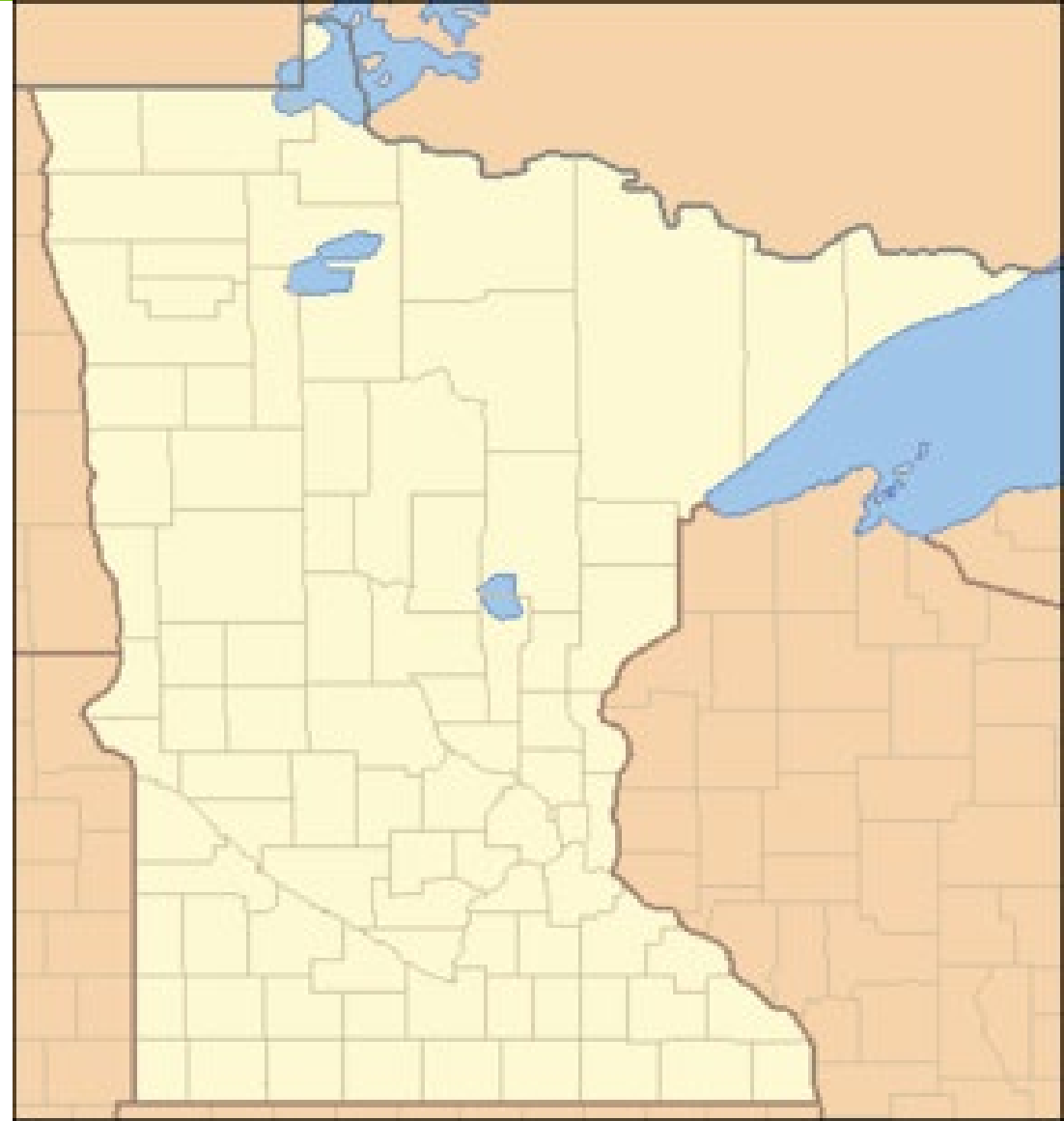
<https://attendee.gototraining.com/r/856009791549776385>

Minnesota's OP Participation

Minnesota Tester Priority:

1. GEDTS will invite those with a cancelled test since mid-March time frame.
2. They will invite testers who have passed 3 of 4 subjects.
3. They will invite to those on Minnesota's priority tester list, (which could include those with job offers, those enlisting in the military, court ordered and other priorities)
 - **Send priority testers (name, GED ID#, and reason for prioritization) to brad.hasskamp@state.mn.us.**
4. They will invite all individuals who have a GED Ready Green in the past 60 days.

NOTE: All individuals will have to show a GED Ready green in the past 60 days in order to schedule.



GED Subsidy Code Update: MNGED30

Still funding left, though not currently being used.

July-March: Nearly 90% of the subsidy has been spent (\$28,830 left).

Subsidy is currently approved by to get same funding again starting July 2020.



GED Ready Promotion



[Home](#) / [Study](#) /

- Those with a cancelled test are getting a free GED Ready and free GED OP Test voucher.
- All others can take GED Ready for 50% off.
- Promo which will be introduced later this month for all.

[Blog](#)

[Log In](#)

[SIGN UP](#)



2020 HiSEAs Competition



Minnesota High School Equivalency Assessments

- Vendor application posting soon
- Almost all reviewers selected
- Anticipated results announced July. Likely transition period from July-December.

A close-up photograph of a compass rose. The compass is mounted on a circular, light-colored surface. The word "CAREER" is printed in a large, serif, all-caps font, following the curve of the circle. A bright red needle is positioned, pointing directly at the word "CAREER". The needle has a metallic base and a sharp, faceted red tip. The background is slightly blurred, emphasizing the needle and the word.

CAREER

Transitions

Julie Dincau

Integrated Education and Training

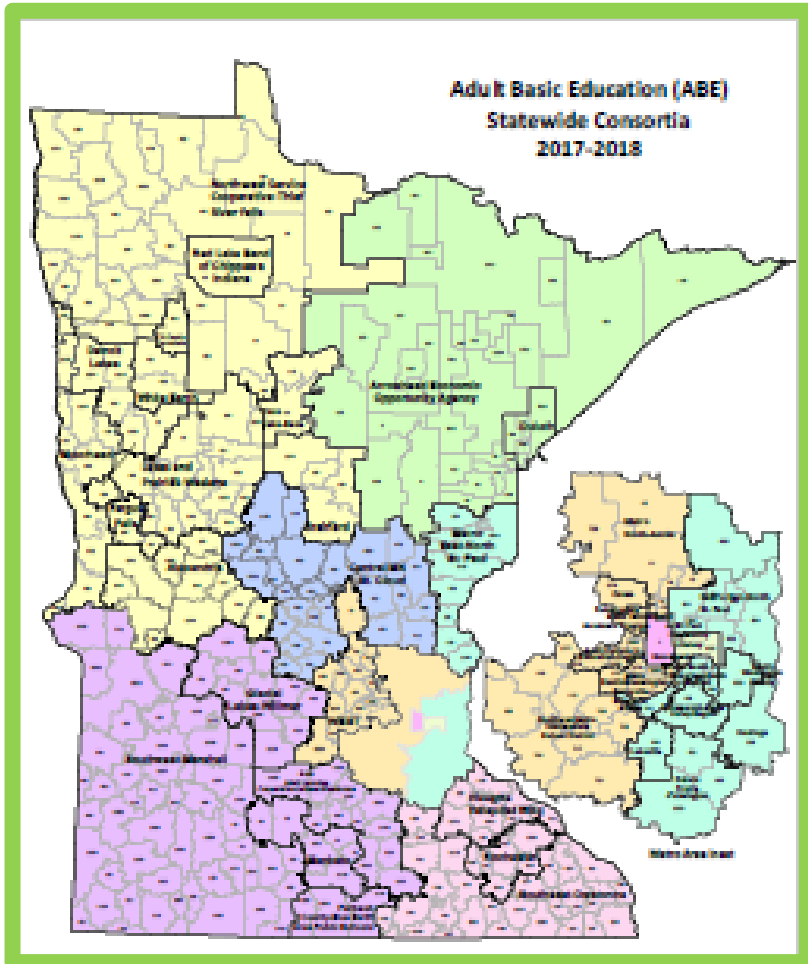
IET Approval Form: Due June 12th

A single set of shared learning objectives is part of the form. This should be completed by the instructors who teach the class.

A webinar providing an overview of how to write these objectives will be held May 28th. Register on the ATLAS website.



Regional Transitions Plans



For the 2020-21 year:

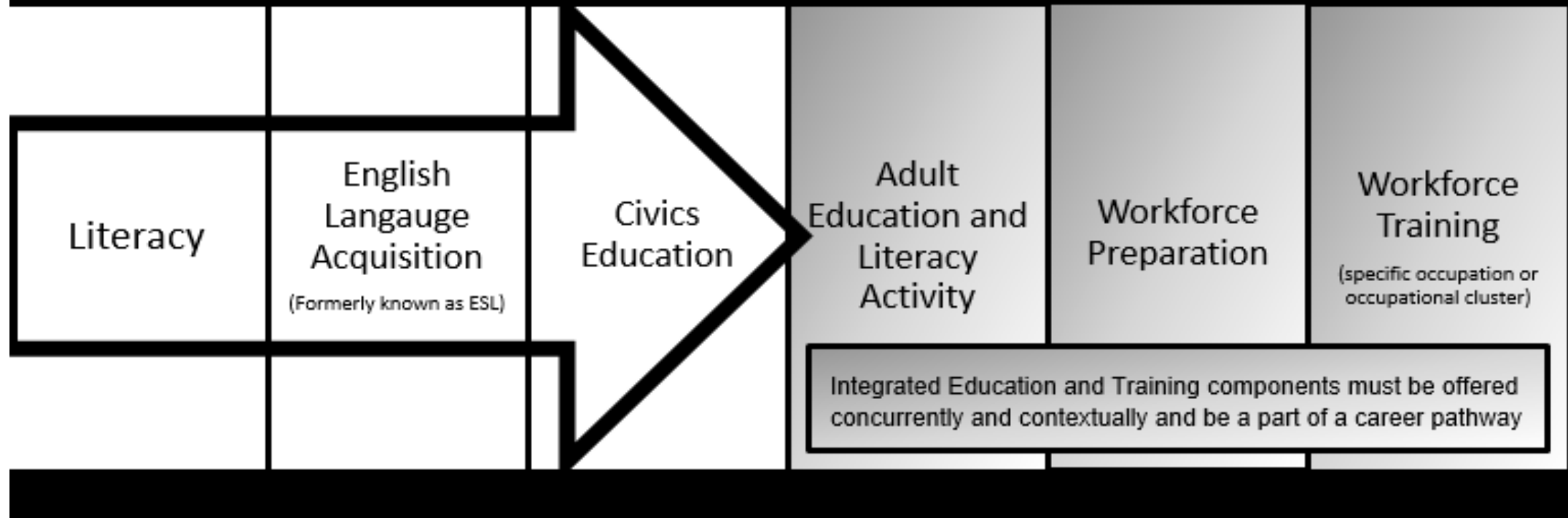
Offering Integrated Education and Training (IET) is a priority for funding

This includes:

- Delivering IET courses through distance education
- Training teachers on online instruction
- Collaborating regionally to develop resources and offer programming

Integrated English Literacy and Civics Education

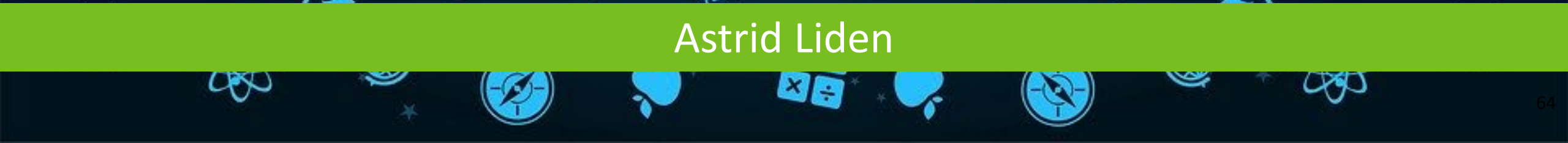
Integrated English Literacy and Civics Education Program Components





Resources & Professional Development

Astrid Liden





COVID-19 and Distance Education Resource Hub

New Schoolology group designed to:

- centralize resources being shared around COVID-19 and its impact on MN adult education programs
- facilitate the sharing of questions, resources, and ideas for continuing to serve learners at a distance

To join:

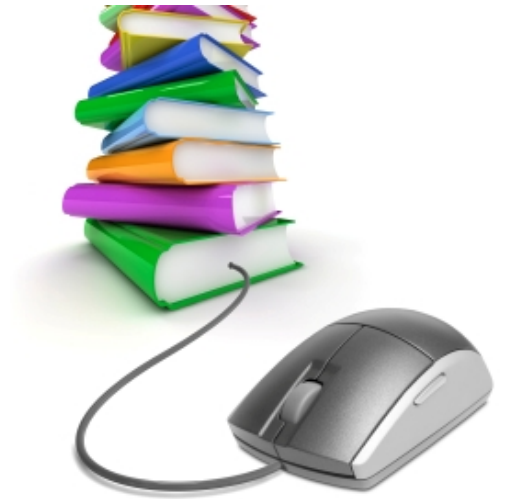
1. If you don't already have a Schoolology account, go to www.schoolology.com and sign up as an **Instructor**.
2. Once you are in your account, go to the top blue bar, choose **Groups**, and then click **My Groups** on the right.
3. Click **Join a Group** and then enter the group access code **4PQM-9XNK-FRF7X**.
4. Click the **Join** button.

Distance Learning Resources

MN ABE Distance Learning Resources: <http://mnabe-distancelearning.org/>

National EdTech Center:

- Tips for [Distance Learning Website](#)
- Weekly [webinars](#) on distance education strategies



LINCS Integrating Technology Discussion Group: <https://community.lincs.ed.gov/>

ABE Teacher Virtual Coffee Breaks

Join Support Network staff and adult education colleagues from around the state to discuss teaching at a distance, share ideas, and ask questions!

- **Mental Wellness (PANDA) - May 27, 2:30pm-3:30pm**

Register on the ATLAS calendar!

Notes from previous Coffee Breaks are in the COVID-19 Schoology group (in the Resources section)





Upcoming webinars

DL Platforms Speed Date: What's New & Approved for Minnesota? - May 21, 1:30-2:30

Designing a Single Set of Learning Objectives for Integrated Education and Training (IET) – May 28, 2:00-3:30

Virtual Pronunciation Instruction for Adult ESL Learners – May 27, 6:30-8:00 & June 2, 10:00-11:30

Virtual Instruction for Low Level ESL - May 29, 2:00-3:30

Remote Tutoring 101 – June 9, 6:30-7:30 & June 17, 10:00-11:00

Register on the ATLAS calendar!

Archived webinars on MN ABE PD YouTube Channel

View past webinars, including webinars on distance learning, on our YouTube channel:

www.tinyurl.com/mnabepd

The screenshot displays the YouTube channel page for "MN ABE Professional Development", which has 880 subscribers. The "PLAYLISTS" tab is selected, showing a grid of 18 video playlists. Each playlist includes a thumbnail image, a title, a video count, and a "VIEW FULL PLAYLIST" link.

Thumbnail	Title	Count	Link
ACP: Adult Career Pathways	ACP: Adult Career Pathways	7	VIEW FULL PLAYLIST
Webchats with MDE Staff	Webchats with MDE Staff	12	VIEW FULL PLAYLIST
ACES/TIF: Academic, Career, and Employability Skills & Transition...	ACES/TIF: Academic, Career, and Employability Skills & Transition...	24	VIEW FULL PLAYLIST
Pronunciation Instruction	Pronunciation Instruction	9	VIEW FULL PLAYLIST
CCRS in the ABE Classroom	CCRS in the ABE Classroom	10	VIEW FULL PLAYLIST
ESL for Adult Learners	ESL for Adult Learners	25	VIEW FULL PLAYLIST
One Room Schoolhouse/Multilevel ABE...	One Room Schoolhouse/Multilevel ABE...	5	VIEW FULL PLAYLIST
Distance & Blended Learning	Distance & Blended Learning	3	VIEW FULL PLAYLIST
MN ABE Administrator Webinars	MN ABE Administrator Webinars	2	VIEW FULL PLAYLIST
LAN Legislative Webinars	LAN Legislative Webinars	4	VIEW FULL PLAYLIST
ESL Teacher Training Toolkit: Classroom Videos	ESL Teacher Training Toolkit: Classroom Videos	33	VIEW FULL PLAYLIST
Classroom Activities for Adult ESL Learners	Classroom Activities for Adult ESL Learners	33	VIEW FULL PLAYLIST
GED & Standard Adult Diploma	GED & Standard Adult Diploma	1	VIEW FULL PLAYLIST
Volunteers in ABE	Volunteers in ABE	4	VIEW FULL PLAYLIST
Math/Numeracy PD	Math/Numeracy PD	20	VIEW FULL PLAYLIST
EBRI: Evidence Based Reading Instruction	EBRI: Evidence Based Reading Instruction	9	VIEW FULL PLAYLIST
Writing Instruction for Adults	Writing Instruction for Adults	1	VIEW FULL PLAYLIST

FY21 CCRS Implementation Cohort



- Prerequisite = CCRS Foundations training
- All standard adult diploma programs need to go through CCRS cohort training prior to launch
- Program application: ideally 1 administrator and at least 1 ELA teacher, 1 math teacher
- Application available on ATLAS website (due June 1)


Stay connected with MN ABE Connect!



Read your newsletter and stay connected!


New resources in your inbox every Tuesday!

Recent Newsletter Articles




ABE Voices Across a Distance: Snapshot from a Rural One-Room Schoolhouse

MN ABE Connect is featuring a series of interviews with Minnesota ABE practitioners on how they are delivering instruction and support during this time. This week, we hear from a teacher working in a rural, one-room schoolhouse setting: Pamela Dane. [Read More](#)

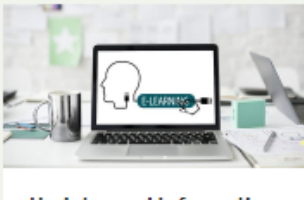


To “Packet” or Not to “Packet”? That Isn’t the Question.

Many teachers and programs are putting learning packets together right now to mail to students or to have on hand for pickup. However, packets are not a new learning tool in ABE. In this two-part article, we will take a look at learning packets and share some best practices we’ve collected from twenty-five teachers around the state. [Read More](#)



ABE Voices Across the Distance: Snapshot of the New Normal from a Beginning Level ESL Teacher



Updates and Information from the Distance Learning Support Team

The DL Support Team is working to help ABE staff make a successful transition to serving learners online. Read on for resources and updates which can help you

Article Categories

- ACES/Transitions
- Adult Career Pathways
- Assessment
- CCR Standards
- Citizenship
- COVID-19
- Cultural Competency
- Digital Literacy/Northeast
- Disabilities
- Distance Learning
- ELA
- ESL
- HSE/GED/Adult Diploma
- Listening
- Math/Numeracy
- Mental Health
- Minnesota ABE
- One-Room Schoolhouse/Multilevel
- Professional Development
- Program Management
- Reading
- Science

Next steps?

What is your ABE program doing or planning for summer?





What
questions
do you
have?

Thank you for your time and your thoughts!

Resources from this
webinar and earlier
communications can be
found online at:

www.mnabe.org/state-abe-presentations

