

A photograph of several lit sparklers exploding against a black background, creating a shower of bright orange and yellow sparks. The sparklers are positioned in the upper right and center of the frame, with their light trails extending downwards and outwards.

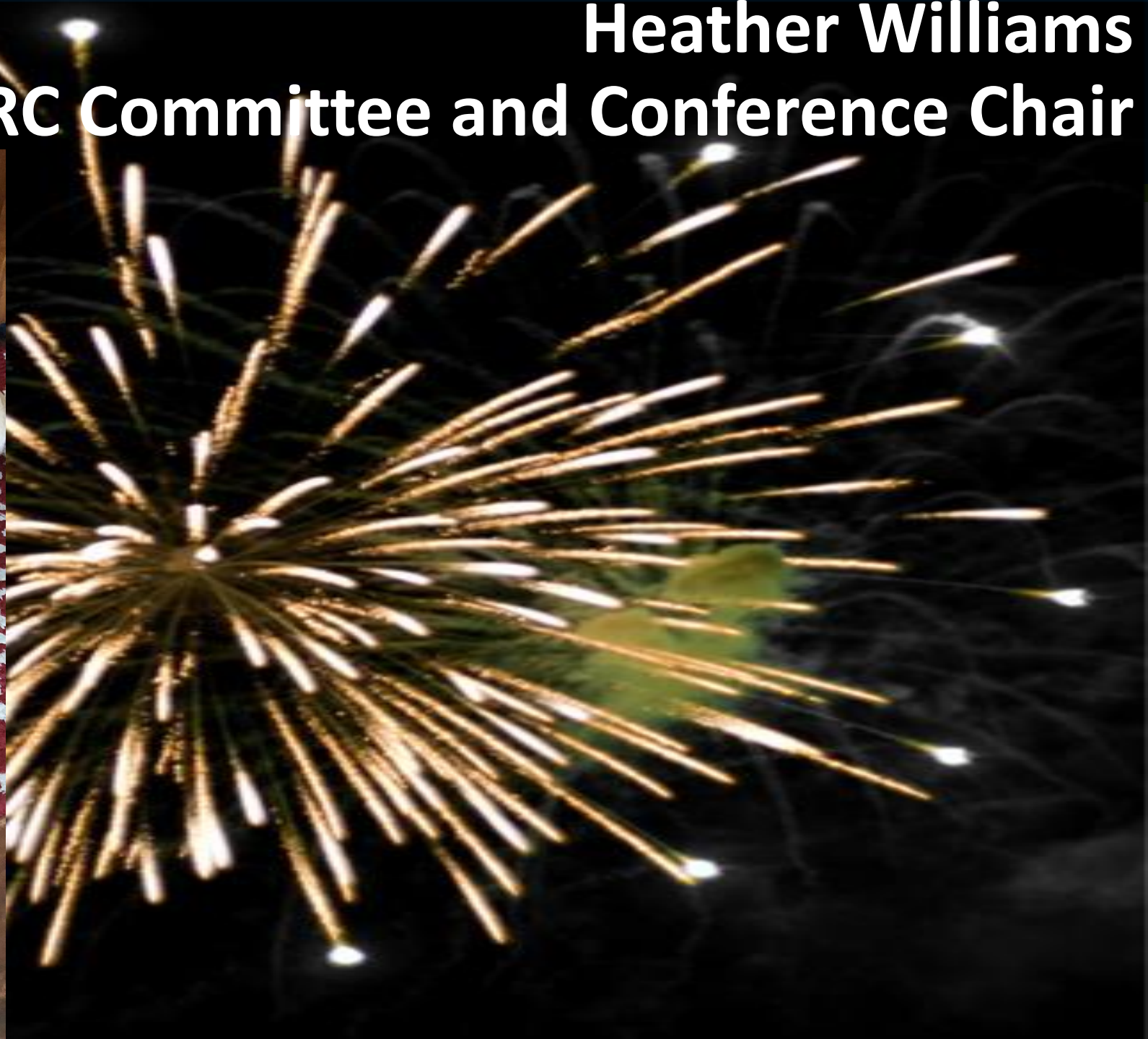
**Welcome to the  
Adult Basic Education (ABE)  
Support Services Conference!**

**November 7-8, 2019**

**Minnesota Department of Education**



**Heather Williams**  
**SPARC Committee and Conference Chair**







*Minnesota*

**Welcomes  
You**

**Todd Wagner, State ABE Director**

# Thank You!

- SPARC Committee
  - Conference Planners
  - Heather Williams, Chair
- Sponsoring organization
  - Southwest ABE (State ABE Assessment Training)
- All the presenters
- Everyone participating





# ABE Support Network



## Minnesota Literacy Council

- technology, volunteer training

## ATLAS (Hamline)

- professional development

## Literacy Action Network

- program quality, administrator support

## SW ABE

- assessment training

## PANDA (Robbinsdale)

- disability resources & assistance

## MN Association of Workforce Boards

- transitions



# State ABE Staff



- Todd Wagner, State ABE Director
- Julie Dincau, Transitions
- Cherie Eichinger, Administrative Support
- Brad Hasskamp, Secondary Credential/Policy
- Astrid Liden, Professional Development
- Alice Smith, GED Records/Administrative Support
- Jodi Versaw, Program Quality

## Assessment Training all across Minnesota

Training Adult Basic Education professionals in the art of standardized testing

**Your Statewide Supplemental Service Provider  
for Assessment Training**

**Marty Olsen**

**SW ABE and State Assessment Trainer**

**[martha.olsen@gmail.com](mailto:martha.olsen@gmail.com)**

Learn more/schedule a training:

**[www.mnabeassessment.com](http://www.mnabeassessment.com)**



# Minnesota ABE Now



Brad Hasskamp | Adult Secondary Credential and Education Policy Specialist

Jodi Versaw | Adult Basic Education Program Quality Specialist



# Key Topics



1. Outcomes and Targets
2. Report Card and Program Improvement
3. Assessment Updates
4. SiD Highlights
5. Program Discussions



# Outcomes and Targets



# Minnesota Adult Education Statistics 2019

58,984 enrollees

- 2,880 had not attended any education before
- 5,538 were incarcerated
- Roughly 3,000 diplomas earned

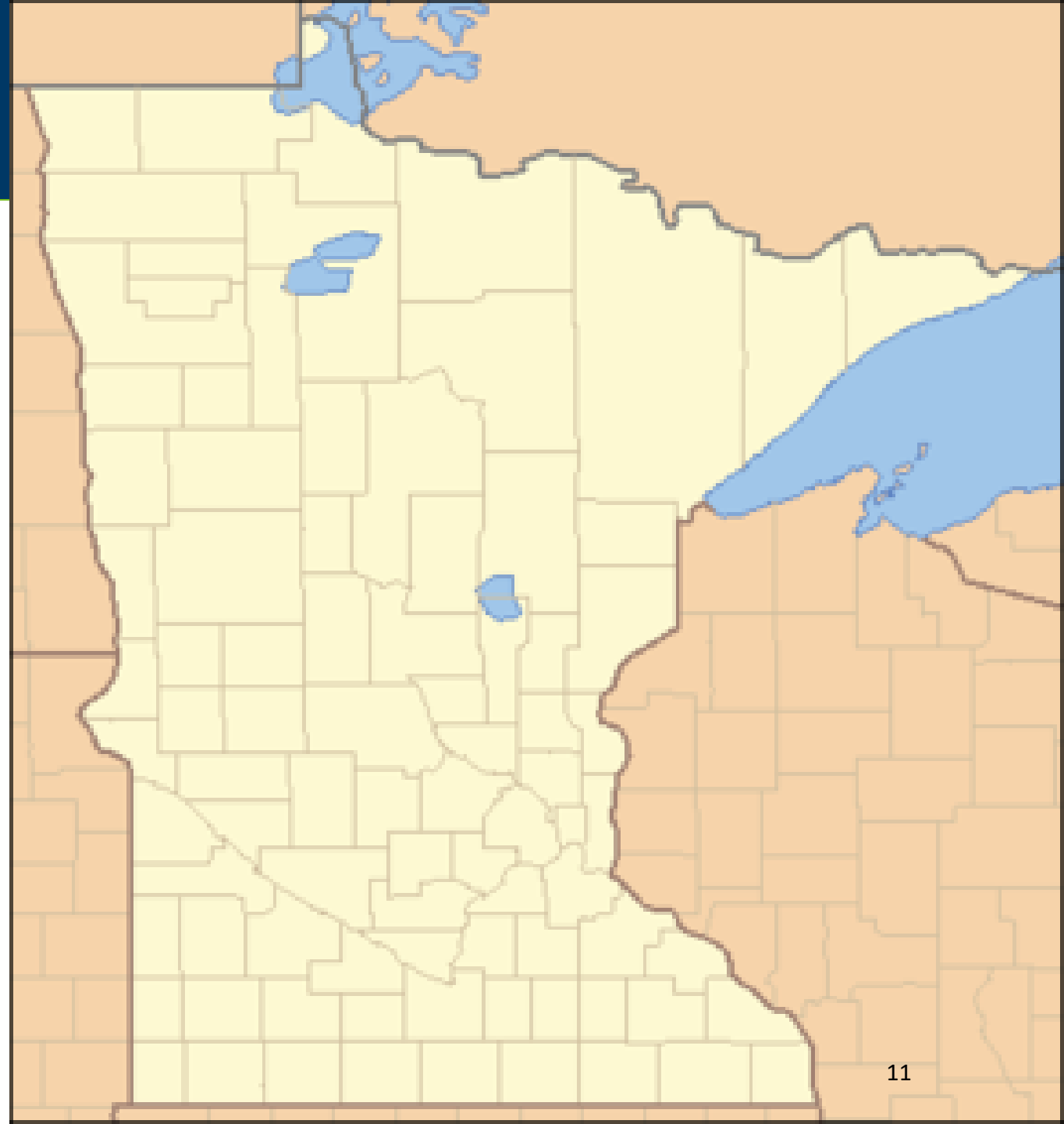
4,465,601 contact hours

- 172,604 were distance learning

1,496 paid staff

2,697 volunteers

333 sites



What percentage of our participants earned a measurable skill gain last year?



# Minnesota ABE's 2018-19 WIOA Outcomes

Measure	Statewide (2018)	Statewide (2019)
Measurable skill gain	<b>39.73%</b>	<b>42.56%</b>

# Measurable Skill Gains (MSG)

## Multiple Ways to Count MSG

(Only one type of gain will be counted for each participant per period)

1. Earn higher scores on approved pre- and post tests to advance to a higher level
2. Earn a secondary credential (high school or equivalency diploma) by June 30
3. Enter postsecondary education (only after participant exits ABE) by June 30





# Targets for Measurable Skills Gains

The U.S. Department of Education sets a target for MSGs for each state.

The Minnesota Department of Education applies the same target for all ABE consortia.

This target is measuring the percent of all ABE participants that earn a MSG.



# Super Targets (2019-2020)

44%

Of participants in ABE levels should earn a MSG

Of participants in ESL levels should earn a MSG



# Coming Soon: New Accountability Targets

1. Measurable skill gain
2. Employment at second quarter after exit\*
3. Employment at fourth quarter after exit\*
4. Median quarterly earnings at second quarter after exit\*
5. Credential Plus (Postsecondary or Employment)\*

\*There may be federal targets for these measures starting July 2020 for 2020-2021.

# Report Card and Program Improvement



# MNABE Report Cards

The MNABE Report Card shows results for ABE consortia across the state.

**Minnesota ABE PY 2019 Measurable Skill Gains (Level Gains and High School Credentials)  
By Consortium  
ABE-Level Participants (12+ hours)\***

Consortium	Number of Participants (ABE Levels)	Number of Participants Rank	Number of Participants who Made a Level Gain	Number of Participants who Completed a High School Credential **	Percent of Participants with MSG ***
Adult Options	261	17	134	15	55.9%
SouthWest Metro	257	19	123	7	49.4%
Rochester	546	10	251	29	49.3%
Southeast ABE	358	13	140	43	47.8%
Corrections	3008	1	1233	409	47.4%
Glacial Lakes ABE	158	25	41	33	44.3%
Moorhead	113	28	41	12	44.2%
Duluth ABE	298	15	128	10	43.6%
Metro South ABE	807	7	326	35	43.2%
Tri-Co Corrections	465	11	194	14	43.2%
<b>NRS Target</b>					<b>43.0%</b>

# MNABE Report Cards – general data

MNABE Report Cards include data on:

- Measurable Skills Gains
- Post-testing Rates
- Retention and Persistence
- Revenue

Consortium	Number of Enrollees (ABE Levels)	Percent of Enrollees Retained to 12 Hours	Percent of Enrollees Retained to 40 Hours	Number of Participants (ABE Levels)	Average Participant Hours	Percent of Participants Retained to 40 Hours
Corrections	3209	93.7%	80.1%	3008	198.14	85.4%
Metro South ABE	1184	68.2%	56.7%	807	177.75	83.1%
International Education C	83	83.1%	63.9%	69	169.03	76.8%
Rochester	945	57.8%	43.9%	546	171.68	76.0%
Minneapolis	1471	68.3%	49.8%	1005	126.97	72.8%
Farmington-Northfield	29	34.5%	24.1%	10	59.60	70.0%
Osseo ABE	560	70.0%	48.2%	392	120.52	68.9%
Adult Options	341	76.5%	51.9%	261	118.99	67.8%
Robbinsdale	773	71.4%	48.0%	552	98.46	67.2%
St. Paul CLC	2820	71.3%	46.7%	2011	111.67	65.5%
<b>Statewide</b>	<b>25612</b>	<b>66.8%</b>	<b>43.4%</b>	<b>17116</b>	<b>118.74</b>	<b>65.0%</b>
Southeast ABE	551	65.0%	41.6%	358	93.77	64.0%



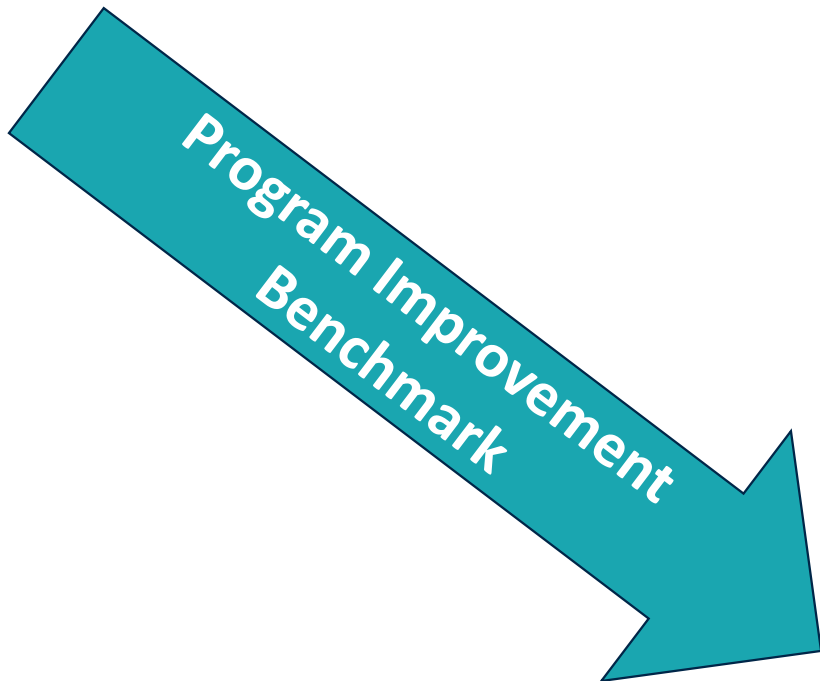
# MNABE Report Cards: Program Improvement

The MNABE Report Card also identifies ABE consortia for Program Improvement

Minnesota ABE PY 2019 Measurable Skill Gains (Level Gains and High School Credentials)  
By Consortium

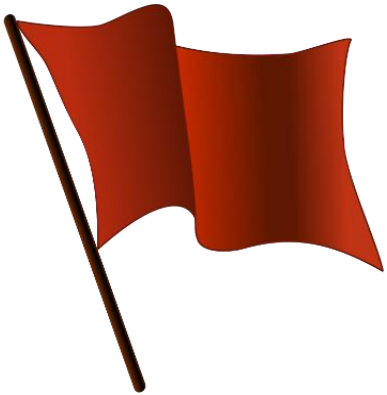
ABE-Level Participants (12+ hours)\*

Consortium	Number of Participants (ABE Levels)	Number of Participants Rank	Number of Participants who Made a Level Gain	Number of Participants who Completed a High School Credential **	Percent of Participants with MSG ***
Osseo ABE	392	12	124	30	37.0%
Statewide ABE	17116	0	5473	1299	36.8%
Northwest Service Coop	265	16	85	14	35.5%
Rosemount-AV-Eagan	261	17	75	18	35.2%
Lakeville	40	35	12	3	35.0%
Minneapolis	1005	5	290	92	34.9%
Central MN ABE	252	20	69	32	34.9%
International Education C	69	32	24	0	34.8%
Area Adult Learning Coop	29	37	8	2	34.5%
Alexandria ABE/ESL	104	30	31	5	33.7%
Hiawatha Valley ABE	85	31	22	6	32.9%
Metro North ABE	1330	4	371	90	32.7%
Great Rivers ABE	229	21	69	8	31.9%
Metro East	1744	3	447	120	30.7%
Red Lake	23	39	4	4	30.4%
<b>Program Improvement Benchmark</b>					<b>30.1%</b>



# Program Improvement Flags

## How were ABE consortia identified for Program Improvement?



ABE consortia are required to participate in Program Improvement in 2019 if:

- Measurable Skill Gains (Level Gains and Diplomas) for ABE students fell below 30%
- Measurable Skill Gains (Level Gains and Diplomas) for ESL students fell below 30%

and/or

- Post-testing rate for students who have 40+ hours fell below 60%



# Program Improvement Process 2019-2020

## What do consortia in Program Improvement have to do?

- One-day Program Improvement Workshop in November
- Program Improvement planning
- Technical assistance from MDE



# Program Improvement Process 2020 and beyond



Data from program year 19-20 will be reported on the 2020 MNABE Report Card in early fall of 2020, kicking off the next Program Improvement cycle.

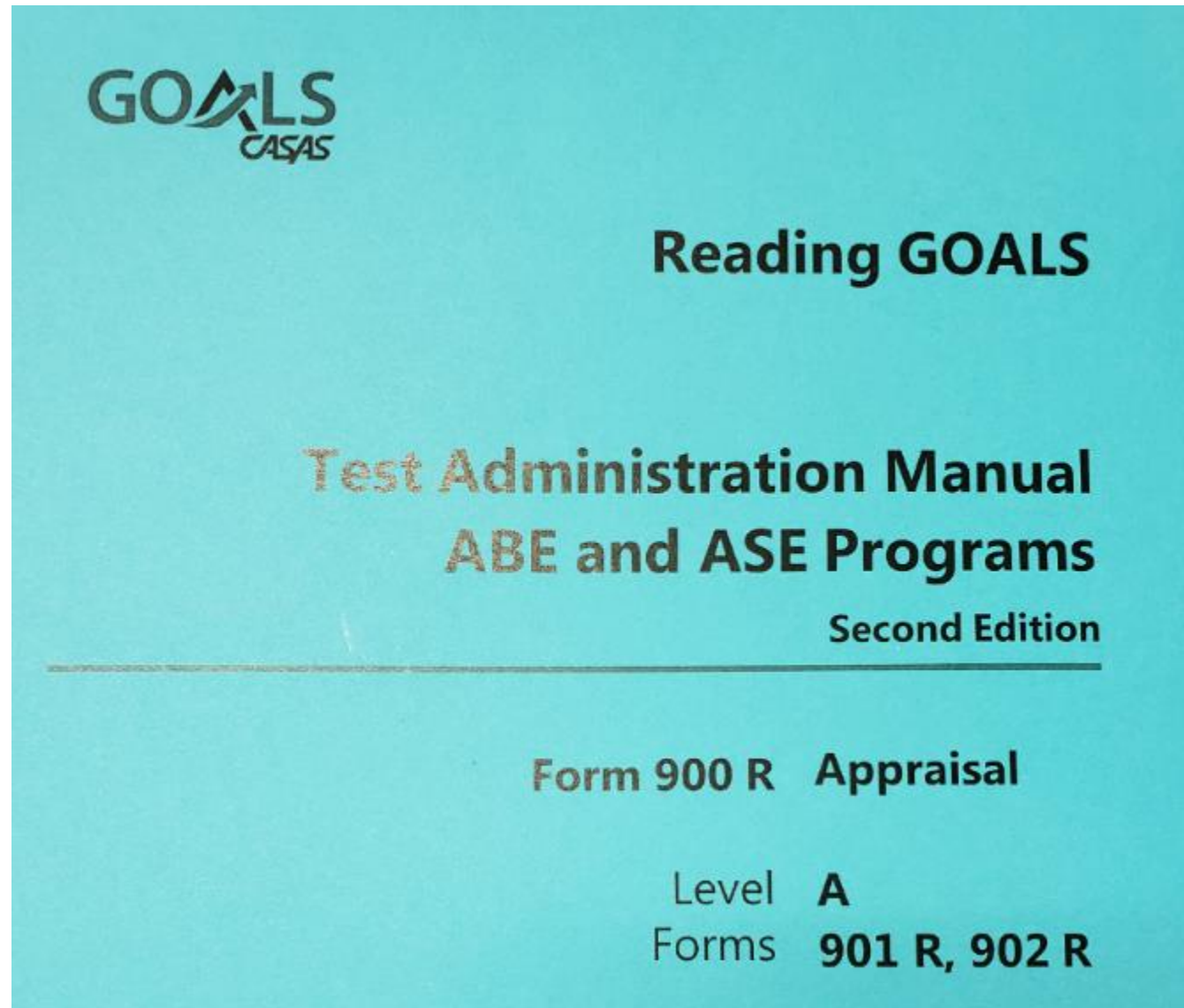
# Assessment Updates



# Test Update: CASAS GOALS updated Test Administration Manual

Make sure your program is using the 2<sup>nd</sup> edition of the CASAS GOALS Test Administration Manuals for both Reading and Math.

[www.casas.org](http://www.casas.org)



# Test Update: TABE 11/12 Testing Times



## TABE 11&12 Maximum Allowable Testing Times

### Math

Level	Part 1 Testing Times	Part 2 Testing Times
E	65 minutes	
M	55 minutes	10 minutes
D	35 minutes	30 minutes
A	30 minutes	35 minutes

### Reading

Level	Part 1 Testing Times	Part 2 Testing Times
E	50 minutes	50 minutes
M	50 minutes	50 minutes
D	50 minutes	50 minutes
A	50 minutes	50 minutes

### Language

Level	Testing Times
E	55 minutes
M	55 minutes
D	55 minutes
A	55 minutes

### Locator Test

Subtest	Testing Times
Reading	35 minutes
Language	20 minutes
Math	10 minutes (Part 1) 10 minutes (Part 2)

*TABE 11&12 Maximum Allowable Testing Times approved by National Reporting System (NRS) July 19, 2019*

# SiD Highlights



# New Level Gains By Demographics Report

Start Date:  End Date: 6/30/2020 View Report

Site: Metro North ABE Sub Site: All SubSites

Gender: All Race/Ethnicity: All

Age Range: All Education Level: All

Born in the United States?: All

1 of 1 Find | Next

## Level Gains and Post-Test Rates 7/1/2019 - 6/30/2020

Metro North ABE

All SubSites

Gender: All  
Race/Ethnicity: All  
Age Range: All

Education Level: All  
Born in the US?: All

ESL or ABE	Pre Test EFL		# of Students	Hours*	Avg Hours	Has Post Test	% Post Test	Gain	Diploma	GED	MSG**	MSG %	NRS Target 2019/2020
☑ ABE	☑ ABE Level 1		28	1362.3	49	11	39.3%	3	0	0	3	10.7%	61%
	☑ ABE Level 2		177	11287.8	64	76	42.9%	19	0	0	19	10.7%	48%
	☑ ABE Level 3		176	9894.3	56	58	33.0%	19	0	1	20	11.4%	43%
	☑ ABE Level 4		156	5077.8	33	14	9.0%	8	0	2	10	6.4%	41%
	☑ ABE Level 5		25	1367.8	55	10	40.0%	4	0	1	5	20.0%	52%
	☑ ABE Level 6		15	477.8	32	5	33.3%	0	0	0	0	0.0%	42%
	Total		577	29467.5	51	174	30.2%	53	0	4	57	9.9%	44.0%
☑ ESL	☑ ESL Level 1		48	3878.3	81	25	52.1%	10	0	0	10	20.8%	45%

# Report Learners' Barriers to Employment

**Work Status**  **For Unemployed: (MM/DD/YYYY) ?**  **Public Assistance**  **For MFIP: (MM/DD/YYYY) ?**

**Highest Formal Education Level**  **Education Location**

**NRS Data (check all that apply) ?**

<input type="checkbox"/> Cultural Barriers	<input type="checkbox"/> Homeless
<input type="checkbox"/> Disability	<input type="checkbox"/> Learning Disabled
<input type="checkbox"/> Displaced Homemaker	<input type="checkbox"/> Low Income ?
<input type="checkbox"/> Ex-Offender	<input type="checkbox"/> Migrant Worker
<input type="checkbox"/> Foster Care	<input type="checkbox"/> Single Parent

**NRS Program (check all that apply)**

<input type="checkbox"/> Personal
<input type="checkbox"/> Privacy
<input type="checkbox"/> Work Referral

Please obtain  
and record these!

# Coming soon: 40-hour waiver



Waiver for 40-hour restriction on post-testing

**ONLY when**

A student plans to exit the ABE program:

AND

has completed a course of study AND/OR is ready to complete a secondary, college-ready or occupational assessment or credential

Examples:

- 12-hour Accuplacer Prep Course
- 20-hour Intensive GED Prep Course
- 30-hour Commercial Drivers License Prep Course



# From 3 to 1-month data lockdown?



Testing and attendance data has a three-month lockdown in SiD.

MDE, Urban Planet and SPARC are discussing the possibility of a 1-month lockdown for testing and attendance data.

# Why a one-month data lockdown?



## Benefits:

- Adheres to best practice in timely data entry
- Makes preparing data for the June and August submissions easier for programs
- Allows MDE to pull accurate statewide data more frequently

**What are your thoughts?**



# Class names and Adult Literacy Hotline

**MINNESOTA Literacy COUNCIL**

About | Services | Advocacy | Events

**DID YOU KNOW?**  
For every dollar spent on AmeriCorps\*VISTA members, \$3.33 is returned to the community.  
DONATE AND SEE YOUR INVESTMENT TRIPLE

Volunteers | Educators | AmeriCorps VISTA | Students

Home > Students > Find free classes for adults

## Find free classes for adults

Need help? Call: 800-222-1990 Text: 612-424-1211

What kind?	Where?	Other	What Times?
<input type="checkbox"/> English (ESL) <input type="checkbox"/> GED classes <input type="checkbox"/> Adult Diploma <input type="checkbox"/> Reading <input type="checkbox"/> Math <input type="checkbox"/> College prep <input type="checkbox"/> Career training <input type="checkbox"/> Citizenship <input type="checkbox"/> Computers <input type="checkbox"/> Accuplacer	City or Zip Code: <input type="text"/>	<input type="checkbox"/> I need childcare <input type="checkbox"/> Distance Learning	<input type="checkbox"/> Mornings <input type="checkbox"/> Afternoons <input type="checkbox"/> Evenings <input type="checkbox"/> Weekends

Search

Please use class names in SiD that describe the class content.

Examples:

- Beginning ESL
- Accuplacer Math Prep
- GED Reading and Writing



# Program Discussions

The background of the entire image consists of several overlapping US ten-dollar bills. The bills are shown from various angles, with some partially obscured by the green text boxes. The text 'THE UNITED STATES OF AMERICA' and 'RESERVE NOTE' is visible on the bills. The serial number 'DB 88881380 A' is also visible on one of the bills.

# First G.E.D. Test Battery Free!

Use code **MNGED30**

Test in Minnesota or approved border community testing center

Must have Minnesota address

MN legislature allocated \$245,000 for subsidy

Will be available until all funds are spent



# Adventures on the HiSEAs!



Minnesota Departments of Education, Administration, Corrections and IT are creating the application/RFP (request for proposals) for approving high school equivalency assessments.

Winter 2020: Seeking reviewers from state, local ABE programs, and tribal nations.

July 2020: Results announced. If there are changes, we will be planning a transition period with the tests.



# Enrolling students who are eligible for K-12

Students age 17-21 who do not have a high school diploma are eligible for ABE and K-12 services but cannot be enrolled in both at the same time.

Students age 17-21 should know the implications for enrolling in ABE because they are giving up their rights in K-12. These rights could include free/reduced meals, bussing, special education.

**Recommendation: We encourage ABE programs to make sure K-12 eligible students are aware of their educational rights during intake.**

Discussion:

- How often do you have K-12 eligible students enrolling in your program?
- How do you help these students understand their rights?

A close-up photograph of a lit sparkler against a dark night sky. The sparkler is the central focus, with a bright, intense light at its tip from which numerous golden-yellow sparks radiate outwards. Some sparks are in sharp focus, while others are blurred, creating a sense of motion and depth. The background is dark, with some out-of-focus bokeh lights in shades of blue, green, and orange, suggesting an outdoor night event.

## Discussion and Questions

**What questions do you have?**

**How can you use this information?**

**What else is happening with your program?**

# ABE Newsletter & Calendar

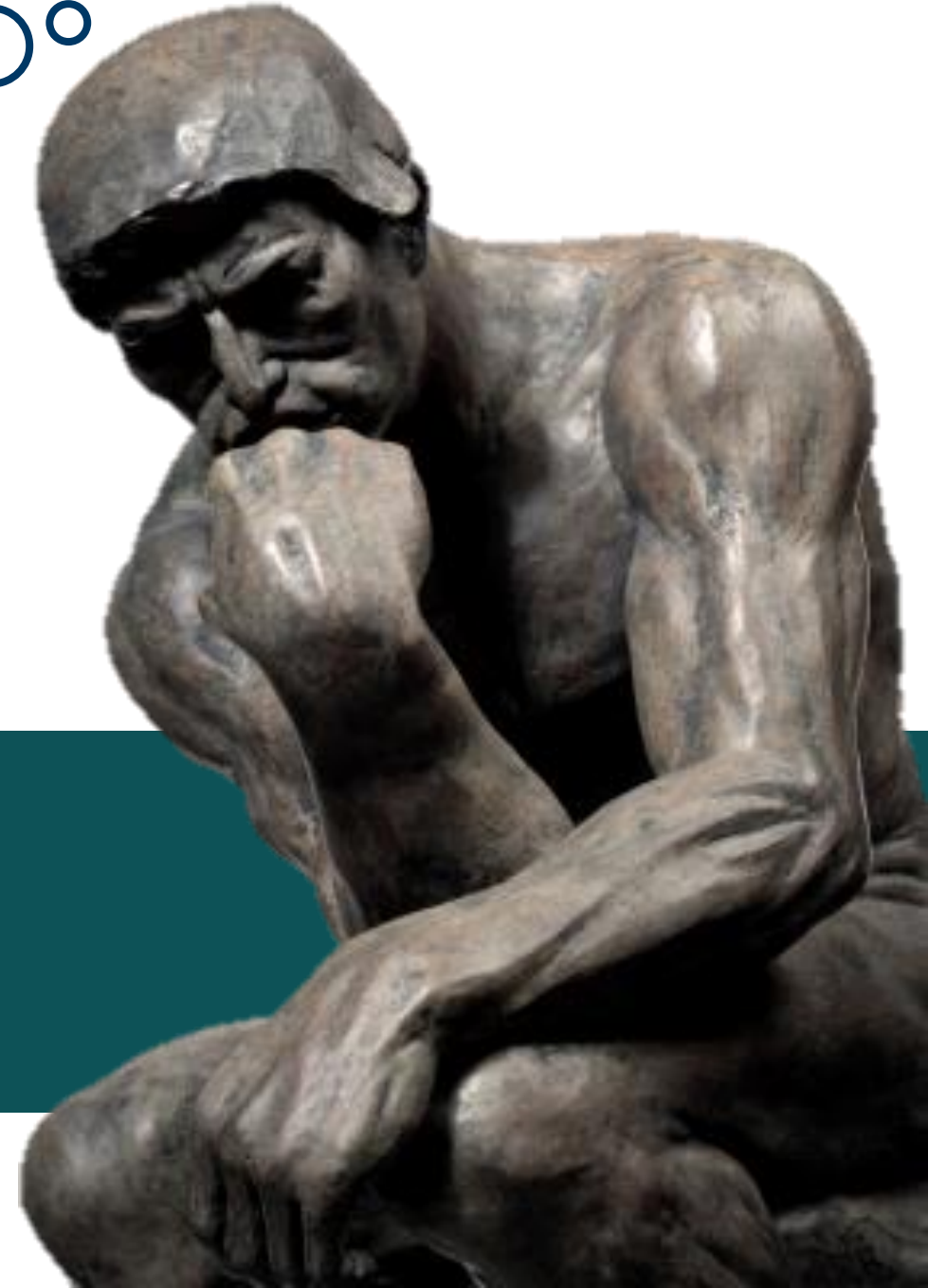
- ABE professional development (PD) information is distributed via the ABE PD E-Newsletter
- Get on our distribution list by contacting [Cherie.Eichinger@state.mn.us](mailto:Cherie.Eichinger@state.mn.us)
- Statewide PD calendar (with info and registration) at [www.atlasABE.org](http://www.atlasABE.org)





**I have more  
questions...**

**Talk with MDE staff  
or SPARC members!**









# SPARC Plug: Light that fire!

ABE Support Professional Advisory and Resource Committee



# SPARC

Support Professional Advisory Resource Committee

## Support Professional Certificate



Available through ATLAS

Attend today's session to learn more: **Session 2 (12:10pm) in CC-17**

### SPARC

The primary role of SPARC is to identify support staff development needs and plan the annual Support Services Conference, which is held each fall. Group members are happy to respond to questions that support professional may have about anything connected to their work in ABE.

The group is comprised of support professionals who are actively working in ABE programs in the Minnesota.

Please contact [Brad Hasskamp](#) if you are interested in joining the group.

### SUPPORT SERVICES CONFERENCE

SW ABE, the Minnesota Department of Education, and SPARC support an annual statewide conference for support professionals. There is a pre-conference focusing on orientation for new staff and assessment training, followed by a full day general conference that includes an update from our state ABE director and other state staff, as well as concurrent sessions in the areas of accountability/NRS, assessment data analysis, intake and orientation, customer service, conflict resolution, effective communication, and cultural awareness.

### SUPPORT PROFESSIONAL CERTIFICATE

The ABE Support Professional Certificate was created to build a culture of professionalism around ABE support services, acknowledge participation in relevant professional development, and help solidify the foundational knowledge and skills of ABE support professionals.

To earn the MN ABE Support Professionals Certificate, staff must provide evidence of participation in training for each competency in four critical domains: 1) ABE Program & Policy Knowledge; 2) Technology;



SCHEDULE

**Mark your calendars!**

**Next ABE Support Services Conference: Nov. 12-13, 2020**



# Enjoy the conference!

Use your **action plan** to identify great ideas you want to try when after the conference!





# Announcement!

**Concurrent Session  
1: Room Switch**

**SiD Basics Session  
in CC-16**

**and**

**PANDA Mental  
Health Workshop in  
CC-17**

**Thank you!**

***Breaking  
News***





**Break**

**Next session starts at 10:05**